



Avian Models for 3D Applications  
Characters and Texture Mapping by Ken Gilliland

# Songbird ReMix

# Game Birds

## Contents

### Manual

Introduction	3
Overview and Use	3
Conforming Crest Quick Reference	4
Creating a Songbird ReMix Bird with Poser and DAZ Studio	5
Using Conforming Crests with Poser	6
Using Conforming Crests with DAZ Studio	8

### Field Guide

List of Species	9
<b>Upland Game Birds</b>	
Gambel's Quail	10
Mountain Quail	11
Northern Bobwhite	12
Spruce Grouse	13
Rock Ptarmigan	14
Gray Partridge	15
Ring-necked Pheasant	16
<b>Pigeon-like Birds</b>	
Band-tailed Pigeon	17
Mourning Dove	18
Crested Dove	19
Wompoo Fruit Dove	20
Resources, Credits and Thanks	21

Copyrighted 2006-2011 by Ken Gilliland [songbirdremix.com](http://songbirdremix.com)

*Opinions expressed on this booklet are solely that of the author, Ken Gilliland, and may or may not reflect the opinions of the publisher, DAZ 3D*

# Songbird ReMix Game Birds

## Introduction

Songbird ReMix Gamebirds adds Doves, Pigeons, Quail, Grouse and many other Upland Game birds to the Songbird ReMix library. Using the powerful morphs from the Songbird ReMix Gamebird model, texture maps and versatile conforming crests and tails, the represented birds are portrayed more accurately and with stronger degree of realism. Included are 11 species of birds, some with male and female markings.

Birds range from the elusive Spruce Grouse to the Magnificent Ring-necked Pheasant and travel the globe from the Americas to China and Australia. The most common bird in North America, the mourning dove, is in this set as well as its Australian cousin, the crested dove. Whether you're a bird lover, a game hunter or a landscape artist, this is the package for you!


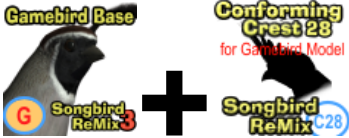


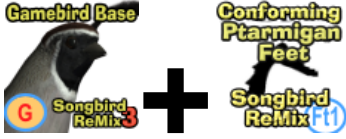
## Overview and Use

Select **Figures** in Runtime Folder and go to the **Songbird ReMix** folder. Here you'll find an assortment of files that are easily broken into 2 groups: **Conforming Parts** and **Bird Base models**. Let's look at what they are and how you use them:

- **Bird Base Models**
  - **SBRM Gamebird Base Model**- This is primary bird model base used for all Bird species in this package.
- **Conforming Parts** (All Conforming Crests or Tails have alphabetical Icons in the lower right corners such as "**C1**", "**C28**" or "**T2**". This corresponds with characters in the Pose folders. All MAT/MOR files with the same icon use that particular Conforming Part. ***Be sure to read this:*** Most conforming parts are Crests which cover the head part. When posing the Base Model, the Conforming Part will follow any Bend, Twist or Rotate Commands. It will not obey any **SCALE** or **MORPH** commands you give the Base Model. You must manually scale the Conforming Part and with morphs such as "OpenBeak" you must also set it's counterpart in the head part of the Conforming Crest. So Now let's look at what's included in Conforming Parts:
  - **<C28> Conforming Crest28**. For use with the Crested Dove and is specifically for the Gamebird model. There are Head morphs such as LowerCrest , Tuck feather and placement morphs

- **<T2> Conforming Tail2.** For use with the Ring Neck Pheasant. This creates a completely new tail with three morphs; BendUp, BendDown and Length found in the TailFeathers section.
- **<F1> Conforming Foot1.** For use with the Ptarmigans and adds 'Fluff' to the feet. There are a few Control morphs included.

## Conforming Crest Quick Reference

Load Model(s)	To Create... (apply MAT/MOR files)
	<ul style="list-style-type: none"> <li>• Band-tailed Pigeon</li> <li>• Gambel's Quail (male/female)</li> <li>• Gray Partridge</li> <li>• Mountain Quail (male/female)</li> <li>• Mourning Dove</li> <li>• Northern Bobwhite (male/female)</li> <li>• Spruce Grouse (male/female)</li> <li>• Wompoo fruit-dove</li> </ul>
	<ul style="list-style-type: none"> <li>• Crested Dove</li> </ul>
	<ul style="list-style-type: none"> <li>• Ring-necked Pheasant</li> </ul>
In Poser 2010 and above....	
	<ul style="list-style-type: none"> <li>• Rock Ptarmigan (Summer &amp; Winter)</li> </ul> <p>Newer Versions Poser a single Conforming Parts</p>
In Poser 8, Pro and below...	
 <p>Load both Conf_Feet1-Right and Left</p>	<ul style="list-style-type: none"> <li>• Rock Ptarmigan (Summer &amp; Winter)</li> </ul> <p>Older Versions Poser require Conforming Parts for each foot</p>

### Parenting and Conforming...

Poser Pro 2010 takes care of a longstanding issue with conforming to scaled items (such as legs). The Conf\_Feet1 model will only conform properly to the Ptarmigan Feet in that version of Poser. For other versions of Poser you must "parent" the Right and Left models to the Right and Left Feet of the Gamebird Model.

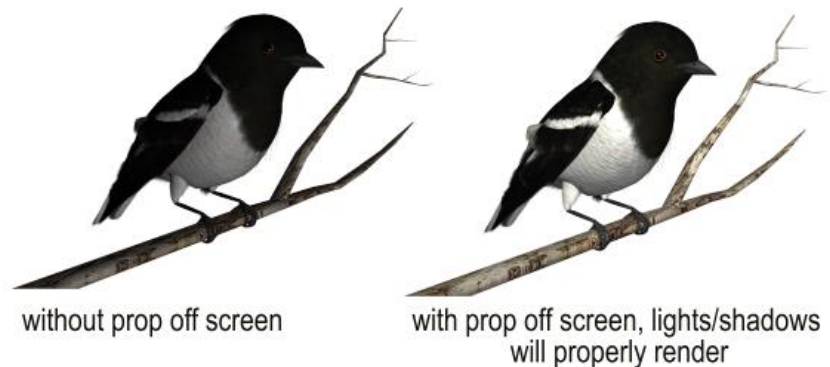


## Creating a Songbird ReMix Bird

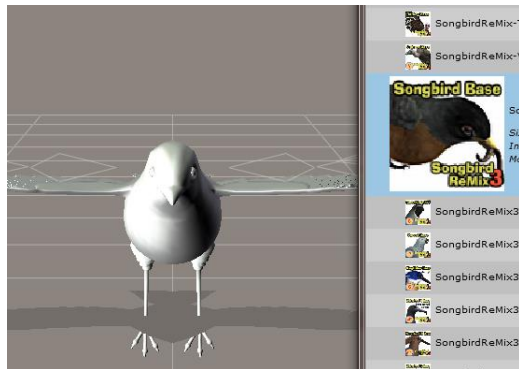
1. Choose what you want to load. For this example, we'll create a Quail species.
2. Load Poser or DAZ Studio and select **FIGURES** and the Songbird ReMix folder. DAZ Studio users will select the "Poser Formats" → "My Library" → "FIGURES" → "Songbird ReMix".
3. Because all of the Quail use the "Gamebird" base model (**G**) we'll load that.
4. Go to the **POSES** folder and **Songbird ReMix** Master folder, then select the appropriate Songbird Remix library. This again, for DAZ Studio users will be found in the "Poser Formats" file section.
5. Select a Quail Species and load/apply it by clicking the mouse on to our loaded Songbird ReMix base model. This species pose contains morph and texture settings to turn the generic model into the selected Quail. It will automatically apply the correct DAZ Studio material settings if you are using DAZ Studio.

## Scaling and Square Shadows in Poser

All the birds in this package have to scaled proportionally to DAZ 3D's Victoria and Michael models. The smallest of the included birds **MAY** render with a Square shadow or improper lighting. This is a bug in Poser. Poser can't figure out how to render a shadow for something really small, so it creates a square shadow. The solution is to put a larger item that casts a normal Poser shadow in the scene (even if it is off camera) and the square shadows will be fixed or BODY scale the bird to a larger size.

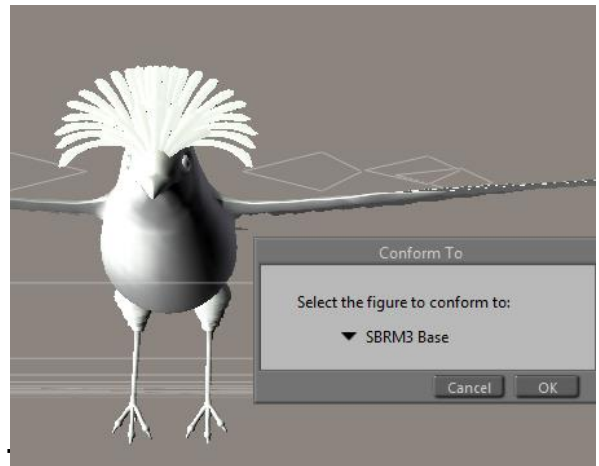


# How to build a Songbird ReMix Character with a Conforming Crest in Poser

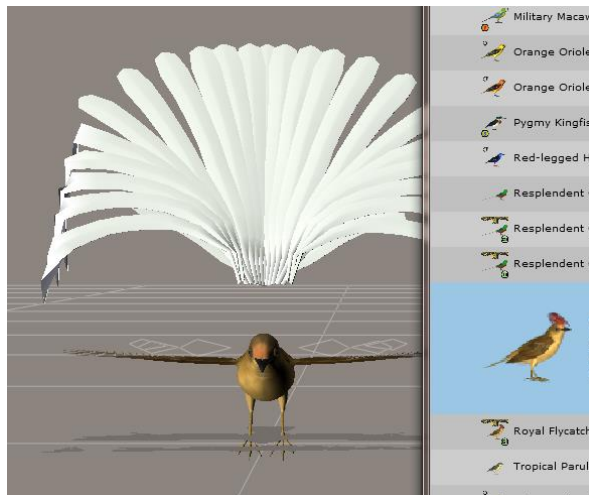


1. In the Figures section, load a Bird base Model. Then load the appropriate conforming part for the bird you're trying to create.

2. Conform it to the bird base model.



3. Select the Base Model and go to POSES. Select and apply the appropriate Character/Material pose setting for the bird you're creating.



4. The Conforming part will look wrong. That's okay—we're going to fix that now. Select the conforming part and apply appropriate Character/Material pose for the part.

5. Voila! Your bird is done. Just remember to select the bird base when posing and often there are additional morphs in the conforming part you can use.



## Updates and Freebies

The Songbird ReMix series is constantly growing and improving. New morphs and additions to upcoming and future products often end up benefiting existing sets with new geometry, morphs and textures.

Songbirdremix.com always has the latest updates and additions to existing Songbird ReMix products (often months before they are updated at DAZ), plus the latest digital and real bird news, tutorials, videos, all the Field Guides, free bird characters, props and much more...

**[Songbird ReMix.com](http://SongbirdReMix.com)**

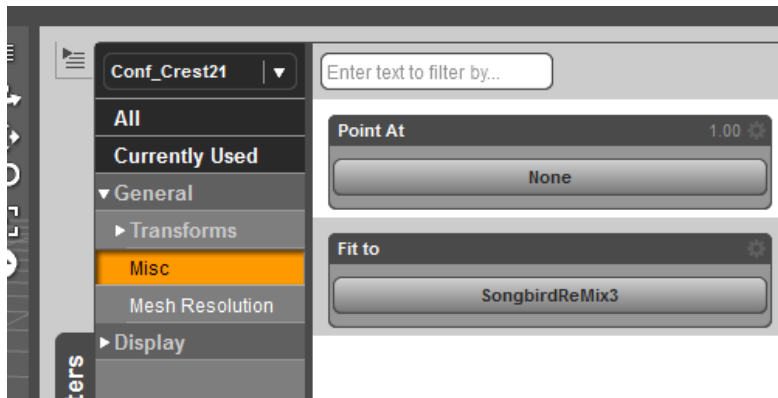
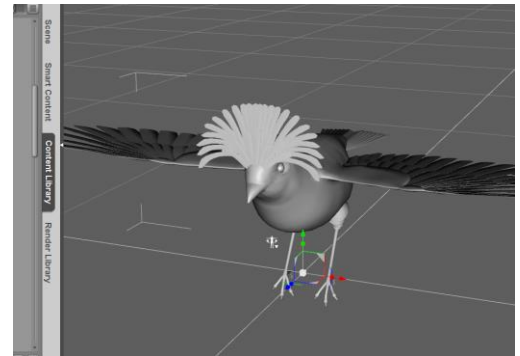




# How to build a Songbird ReMix Character with a Conforming Crest in DAZ Studio

In the **Runtime** folder, select **Figures** and load the **Songbird ReMix Model** and the appropriate **Conforming Crest** in Studio. Select the **Conforming Crest** by selecting on the screen or in the **Scene Tab**.

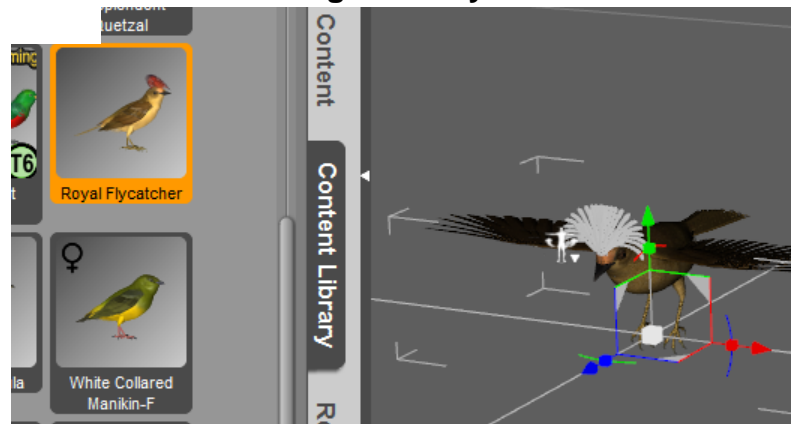
Now, using the **"FIT TO"** command in the **Parameters Tab**, Select the **Songbird ReMix Model**. Go back to the **Scene Tab** and select the **Songbird ReMix Model**.



Select the **Studio Content Folder** and go to the **Animals : SBRM : !CreateYour Own : Characters** folder and select the appropriate **Songbird Remix library**. Apply the **Character** setting to the bird base. It will probably reduce the size significantly and

change the shape of the bird. Now that the bird is sized, select the conforming part and apply the conforming part character settings.

Voila! Your bird is done. Just remember to select the bird base when posing and often there are additional morphs in the conforming part you can use.





## **Songbird ReMix Game Birds**

# **Field Guide**

### **Upland Game Birds**

**Gambel's Quail  
Mountain Quail  
Northern Bobwhite  
Spruce Grouse  
Rock Ptarmigan  
Gray Partridge  
Ring-necked Pheasant**

### **Pigeon-like Birds**

**Band-tailed Pigeon  
Mourning Dove  
Crested Dove  
Wompoo Fruit Dove**

**Common Name:** Gambel's Quail  
**Scientific Name:** *Callipepla gambelii*

**Size:** 10 inches (25 cm)

**Habitat:** North America; throughout the Sonoran Desert. Found in areas of brushy and thorny desert vegetation.

**Status:** Least Concern.

**Global Population:**

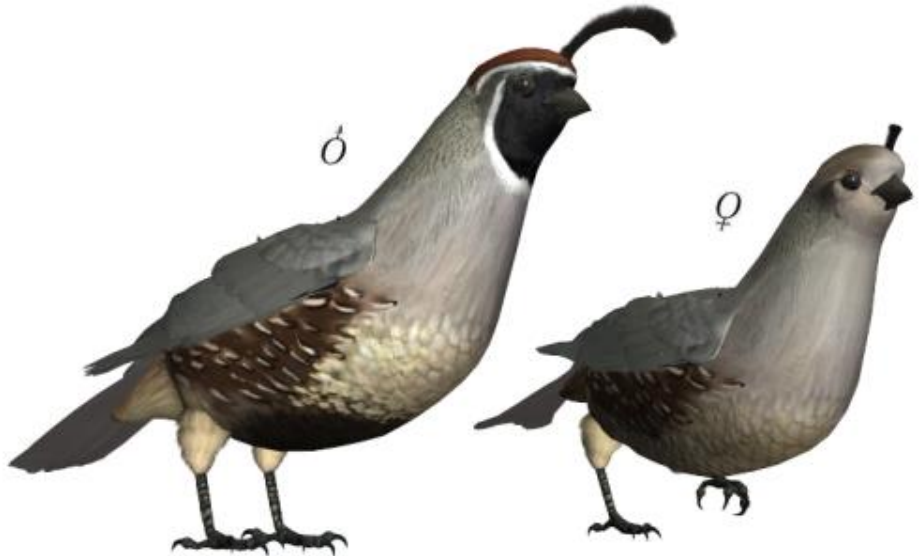
1,800,000 mature individuals.

Widespread and common.

**Diet:** Seeds, leaves, fruits, and a few insects.

**Breeding:** The Male is boldly patterned with black face and a black belly patch. The male also has large plumed topknot. The female

lays 10-15 white eggs with brown splotches in dense brush, often by the base of a tree or large rock. The young quickly learn to follow their mother to food and water sources within hours after hatching.



**Cool Facts:** The Gambel's Quail does look similar to the California quail but lacks chestnut coloring on its flanks, the color is much darker brown. The Male crest is lighter than that of the California Quail. Their calls is also very different, while the California Quail makes the very recognizable "cu-Ca-cow" the Gambel's Quail lets out a "Ka-KAHHHH"

The Gambel's Quail is adapted to living in a dry, desert environment; however it reproduces best in years with adequate water.

Adults and immature young congregate into coveys of many birds in mid-summer through the winter. In the springtime, Gambel's quail pair off for mating and become very aggressive toward others. Gambel's quail are monogamous, and rarely breed in colonies. The young chicks diet is mostly insect, gradually consuming more plant matter as they mature.

Quail are infrequent fliers and prefer to stay on the ground.

**Common Name:** Mountain Quail

**Scientific Name:** *Oreortyx pictus*

**Size:** 10 to 12 inches (25-30 cm)

**Habitat:** North America; California and Oregon. Found in heavy vegetation in the mountains.

**Status:** Least Concern. **Global Population:** 160,000 mature individuals. Common and widespread.

**Diet:** Seeds, fruits, flowers, and a few insects.

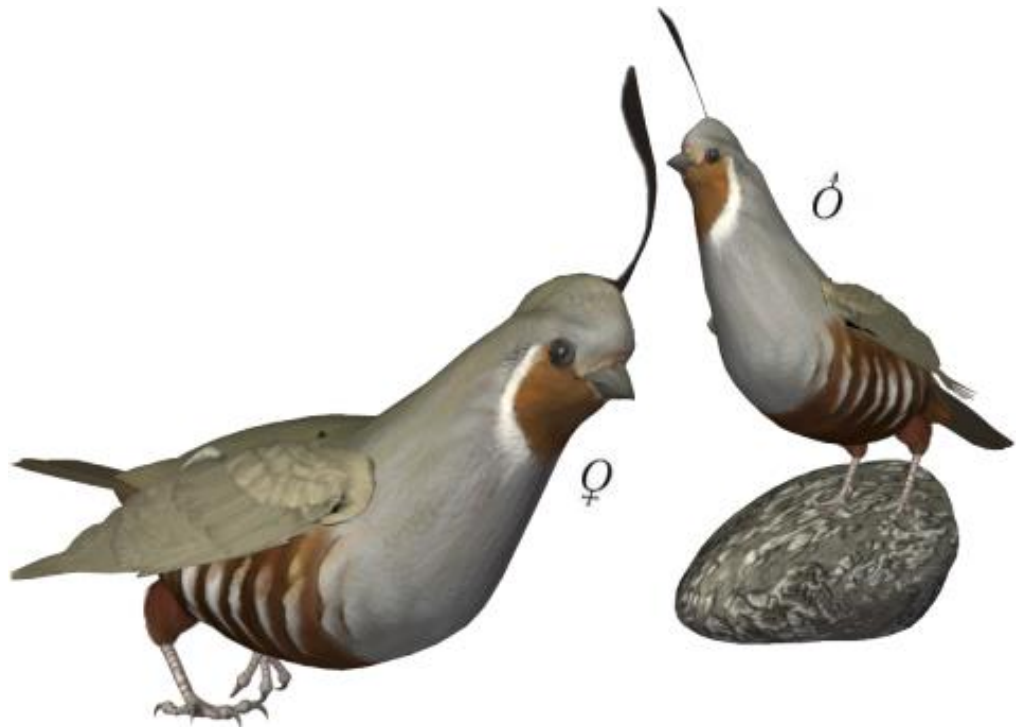
**Breeding:** The female lays 8-10 white eggs with brown splotches in dense brush, often by the base of a tree or large rock. The young quickly learn to follow their mother to food and water sources within hours after hatching.

**Cool Facts:** The Mountain Quail is the largest quail in the United States.

Adults and immature young congregate into coveys of up to 20 birds in mid-summer through the winter. In the springtime, quail pair off for mating and become very aggressive toward

others. Quail are monogamous, and rarely breed in colonies. The young chicks diet is mostly insect, gradually consuming more plant matter as they mature.

Quail are infrequent fliers and prefer to stay on the ground. Any flight is usually short and explosive, with many rapid wingbeats followed by a slow glide to the ground.



**Common Name:** Northern Bobwhite  
**Scientific Name:** *Colinus virginianus*

**Size:** 10-13 inches (30-33cm)

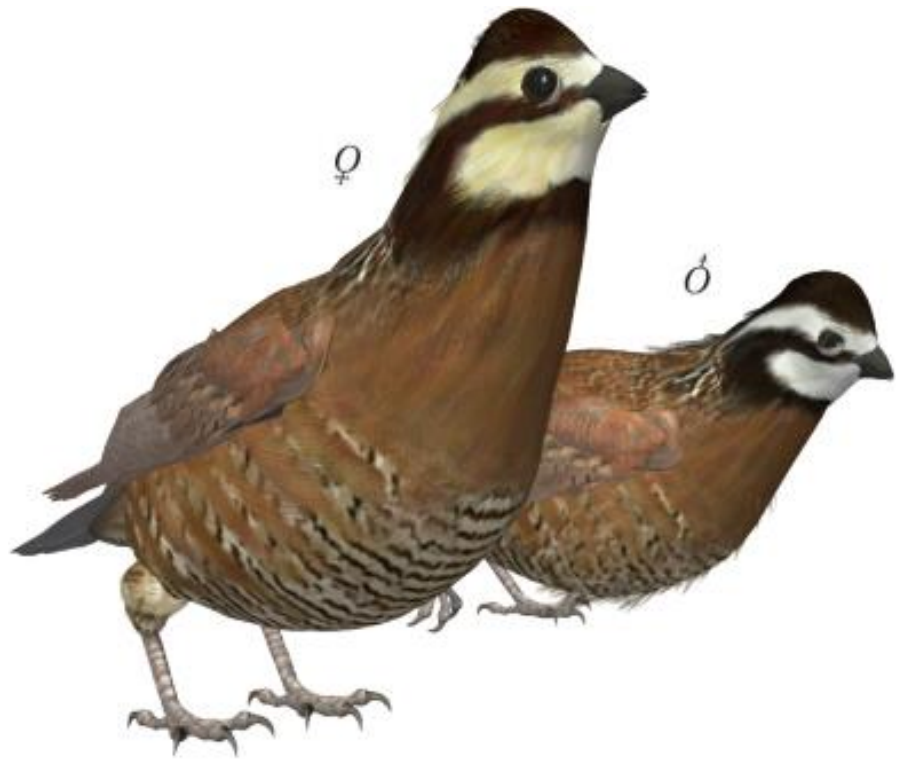
**Habitat:** North America; Eastern United States and Mexico. Also introduced in Pacific Northwest, Caribbean (possibly native to Cuba), Hawaii, New Zealand, Europe, and China. Found in forested areas and forest edges.

**Status:** Near Threatened. **Global Population:** 9,200,000 mature individuals. Changes in agricultural land use (weed removal and herbicide use), forestry (high-density pine plantations), and lack of use of prescribed fire have resulted in widespread habitat fragmentation. Over 20,000,000 individuals were recently being killed annually by hunters in the USA and poor management of populations could result in declines.

**Diet:** Seeds, fruits, flowers, and a few insects.

**Breeding:** Both males and females can incubate nests, with most nests predominantly incubated by females. If the first clutch of eggs is unsuccessful, a breeding pair (may be the same pair or a different pair as that which led to the previous nesting attempt) will attempt to lay, incubate, and hatch additional clutches. Chicks will leave the nest approximately 24 hours following hatching.

**Cool facts:** The bobwhite is a small chicken-like bird found in the eastern United States and Mexico. It is an important game bird and extensively hunted in some areas. It gets its name from its call which sounds a little like "B... Bob... White!"



The Northern Bobwhite is divided into 22 different subspecies. Females show little variation among the different forms, but the males can vary dramatically. Some Bobwhites from Mexico have little banding across the chest, are uniformly rufous, and have all black heads



**Common Name:** Spruce Grouse  
**Scientific Name:** *Falcapennis canadensis*

**Size:** 15 to 16 inches (39-40cm)

**Habitat:** North America; Canada and portions of the northern United States.  
Found in conifer forests

**Status:** Near Threatened. **Global Population:** 1,200,000 Mature individuals. Habitat loss leads directly to the dramatic reduction or elimination of Spruce Grouse populations. Spruce Grouse have historically inhabited forests showing a fire-related patchwork of various stages of regeneration; timber harvesting can produce similar patterns, but only if clear-cut areas are small and if sufficient quantities of optimal habitat are preserved. Listed as "endangered" or "threatened" in some states at the edge of its range.

**Diet:** Seeds, fruits, flowers, and insects.

**Breeding:** Males give territorial displays include fanning and sweeping of the tail, and wing claps but unlike some other grouse, the Spruce Grouse does not have throat-sacs that inflate during the displays. The female lays 4-6 olive eggs in a depression in the ground, lined with conifer needles and feathers. Site always has overhead cover, often at the base of a tree.



**Cool Facts:** The Spruce Grouse's crop can store up to ten percent of the bird's body weight in food, to be digested at night. The Spruce Grouse's gastrointestinal organs change with seasonal shifts in diet. In winter, when the bird must eat more food to maintain its mass and energy balance, the gizzard grows by about 75 percent, and other sections of the digestive tract increase in length by about 40 percent.

**Common Name:** Rock Ptarmigan  
**Scientific Name:** *Lagopus muta*

**Size:** 13 to 16 inches (32-40 cm)

**Habitat:** North America; Mostly Northern Canada; some instances in Washington; Found in the open tundra, barren and rocky slopes in Arctic and alpine areas; in winter, some movement to thickets and forest edge.

**Status:** Least Concern. **Global Population:** 8,000,000 mature individuals. Common and widespread.

**Diet:** Seeds, flowers, and insects.

**Breeding:** Lays 3-13 eggs. Chicks, covered with dense down feathers, leave the nest within 24 hours.

**Cool Facts:** A true bird of the tundra, the Rock Ptarmigan changes its coloring between seasons to blend in with its surroundings. It is pure white in the snow-covered winter, but mottled dark and white when the snows melt. The male Rock Ptarmigan takes longer than the female to change from its white winter plumage into the brown summer garb. During courtship the male is a conspicuous white patch on the brown tundra, visible for kilometers away. The female sitting on the eggs, however, is so well camouflaged that she is difficult to find from less than 2 meters (6 feet) away.



The word *ptarmigan* comes from the Scottish Gaelic *tàrmachan*, which may be related to *torm* "murmur". The silent initial *p* was added in the 17th century through the influence of Greek, especially *pteron*, Greek for "wing".

**Common Name:** Gray Partridge

**Scientific Name:** *Perdix perdix*

**Size:** 12-13 inches (30-33 cm)

**Habitat:** Eurasia; introduced to North America (along flat areas of the Canadian/US border). Found in flat agricultural areas.

**Status:** Least Concern. **Global Population:** 5,000,000 - 10,000,000 mature individuals. Populations have been slowly declining. The numbers have fallen by 85% in the last 25 years in Great Britain. Efforts are being made to halt the decline by creating Conservation headlands. In 1995 it was nominated a Biodiversity Action plan species.

**Diet:** Seeds, fruits, flowers, and insects.

**Breeding:** Clutch size can range up to 22 eggs, and averages 16 to 18. Chicks can leave the nest almost immediately and feed themselves. Chicks eat mostly insects during their first weeks of life.

**Cool Facts:** Gray Partridge hens produce some of the largest clutches of any bird species ranging up to 22 eggs.



A partridge in a pear tree? "In Middle English pertriche "partridge," was derived from Perdix, one of Athene's sacred kings, thrown in the seas from a tower, and carried to heaven in the form of a bird by his goddess. He was the partridge, she the pear tree. Athena was worshipped in Boeotia as Once, the Pear Tree, mother of all pear trees. Perdix, whose name originally meant "the Lost One," was a form of Vishnu-Narayana, called Lord of the Pear Trees in his holy city of Badrinath in the Himalayas (from *badri*, "pear tree"). The pear tree had a feminine-masculine significance through Eurasia. It was also sacred to Hera, whose oldest image at Heraeum in Mycenae was made of pear wood. European peasants considered the pear a favorite "life-tree" for a girl. In Russia pears were used as protective charms for cows. It seems that when the partridge in a pear tree was made into a Christmas carol the symbol of Christ was substituted for Perdix. " (*Encyclopedia Mythica*, Alan G. Hefner)

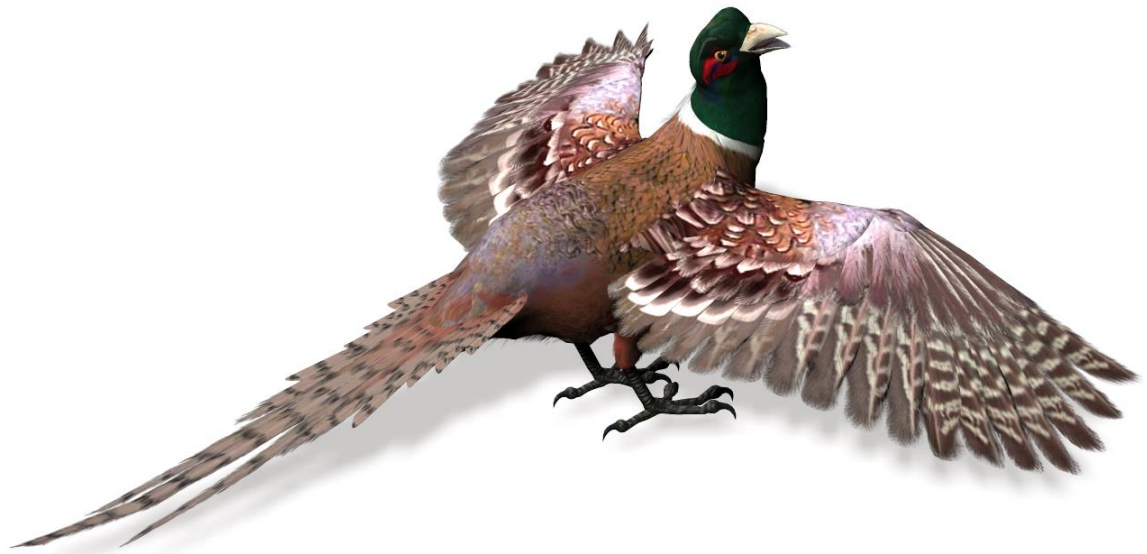
**Common Name:** Ring-necked or Common Pheasant  
**Scientific Name:** *Phasianus colchicus*

**Size:** 20-28 inches (50-70 cm)

**Habitat:** Asia; introduced throughout North America. Found in flat agricultural areas.

**Status:** Least Concern. **Global Population:** 45,000,000 - 300,000,000 mature individuals. Populations are declining, probably because of changes in farming practices.

**Diet:** Seeds, especially cultivated grain, grasses, leaves, roots, wild fruits and insects by scratching on ground and digging with its' bill for food.



**Breeding:**

Pheasants practice "harem-defense polygyny" where one male keeps other males away from a small group of females during the breeding season. Nests are built on the ground, in tall grass or weeds. 7-15 olive brown eggs are laid. Chicks can leave the nest almost immediately and feed themselves. Chicks eat mostly insects during their first weeks of life.

**Cool Facts:** The Ring-necked Pheasant is one of the most popular "Game" birds and is hunted extensively. The bird was brought to Britain around the 10th century but became extinct in the early 17th century. It was then reintroduced in the 1830s and is now widespread. Continual reintroduction has made the pheasant a very variable species in regard to size and plumage. Pheasants were introduced to North America in the 18th century.

In bad weather, pheasants are known to stay in their roost for several days without eating, waiting out the storm.

Pheasants are short-distance fliers and prefer to run. If startled they can suddenly burst upwards at great speed. Their flight speed is only 27 to 38 mph when cruising but when chased they can fly up to 60 mph.



**Common Name:** Band-tailed Pigeon  
**Scientific Name:** *Patagioenas fasciata*

**Size:** 13-16 inches (33-40 cm)

**Habitat:** North and South America; in NA, along the Pacific Northwest. Found in forested areas and forest edges.

**Status:** Near Threatened. **Global Population:** 4,000,000 mature Individuals. Populations are declining in most areas due to habitat loss.

**Diet:** Seeds, fruit, acorns, pine nuts, and flowers.

**Breeding:** Nests look like a flat saucer of loosely intertwined twigs, placed on a sturdy tree limb, and usually contain only one egg. Young are helpless at birth and fledge in about three weeks.

**Cool Facts:** Though the species has two distinct breeding populations in the United States, individuals do move from one region to the other. One Band-tailed Pigeon banded in Oregon was found a year later in Florida, well outside the normal range.

Band-tailed Pigeons are much larger than feral pigeons and dwarf mourning doves. They travel in small flocks of 15 to 30 individuals and tend to be gregarious, sometimes mobbing bird feeders.

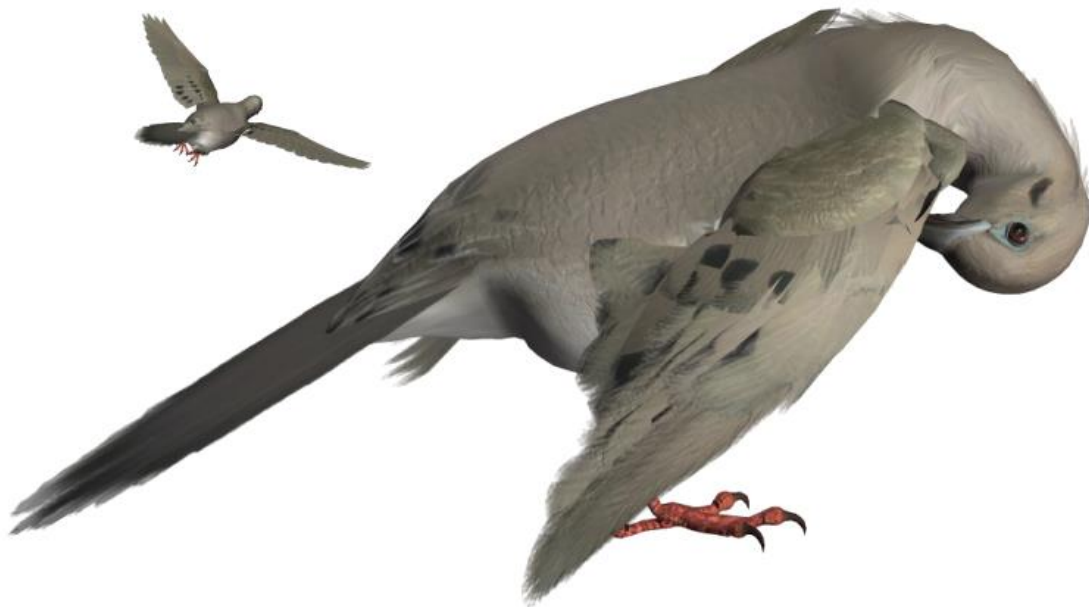


**Common Name:** Mourning Dove  
**Scientific Name:** *Zenaida macroura*

**Size:** 9-13 inches (23-34 cm)

**Habitat:** Throughout North America. Found in variety of open habitats, including agricultural areas, open woods, deserts, forest edges, cities and suburbs.

**Status:** Least Concern. **Global Population:** 130,000,000 mature Individuals.  
Abundant and widespread



**Diet:** Seeds

**Breeding:** During nest-building, the female stays at the nest and the male collects the materials. She takes the materials and weaves it into the nest. Some believe that's why the mourning nests are so poorly built is because the male stands on the female's back while handing her the materials. Doves lay two eggs; clutches of three or four are the result of more than one female laying in the nest. A dove may have up to five or six clutches in a single year.

A mourning dove pair rarely leaves its eggs unattended. The male usually incubates from midmorning until late afternoon, and the female sits the rest of the day and night.

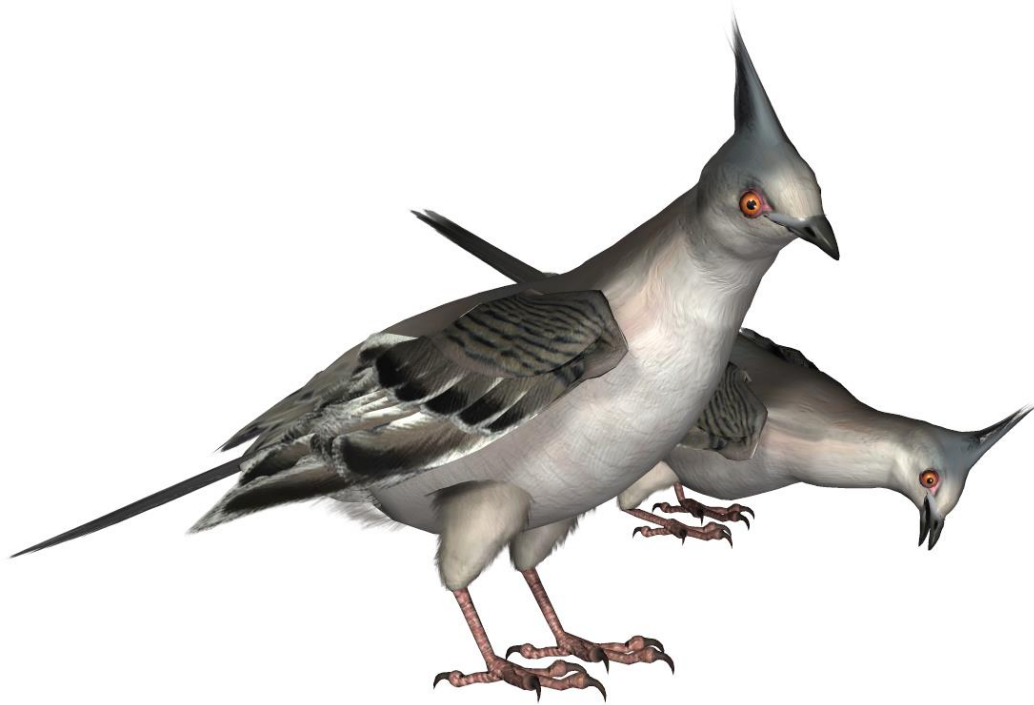
**Cool Facts:** The mourning dove is the most widespread and abundant game bird in North America. Despite being hunted throughout most of its range, it remains among the 10 most populous birds in the United States.

**Common Name:** Crested Dove or Pigeon

**Scientific Name:** *Ocyphaps lophotes*

**Size:** 12 to 13 ½ inches (30-34 cm)

**Habitat:** Australia; found widely throughout mainland Australia except for far tropical north areas. Habitat is grasslands, brush and wooded areas but they can also be seen at watercourses, homestead gardens, pastoral areas, sports grounds, and golf courses. Their habitat has expanded since settlement has produced pastoral lands (previously they were only found in inland and Western Australia).



**Status:** Least Concern.

**Global Population:** unknown.

**Diet:** Seed. They have adapted to feeding on grain in farming areas and are often feeding on the noxious weed of Salvation Jane.

**Breeding:** Nesting

usually occurs in shrubs or trees. Nests usually consist of a platform of twigs with two oval, white and glossy eggs.

**Cool Facts:** Their most distinctive behavior is the beating and whistling sound their wings make when they take off. This is most likely to draw the attention of predators to birds on the wing, and away from any birds remaining on the ground.

There are only two Australian pigeon species that possess an erect crest, the Spinifex Pigeon and the Crested Dove. The Crested Dove is the larger of the two species.

**Common Name:** Wompoo Fruit-dove  
**Scientific Name:** *Ptilinopus magnificus*

**Size:** 16-18 inches (37-45cm)

**Habitat:** Australia; the eastern coast from central New South Wales to the tip of Cape York Peninsula. In Australia, it inhabits almost exclusively the lowland tropical rainforests along the eastern coast, from central New South Wales to the tip of Cape York Peninsula. The abundance of the birds increase in a northerly direction.

**Status:** Near threatened. **Global Population:** unknown. Endangered due to demands placed on their habitat by an expanding human population.

**Diet:** Fruits (primarily figs), flowers and occasionally seed.

**Breeding:** Nests are sturdily constructed from forked twigs not high from the



ground. Both genders help in the construction of the nest. One white egg is laid and the parents share the incubation and care of the chick. In the event, that the chick dies, the doves will attempt to have a second offspring in the same season.

**Cool Facts:** The Wompoo Fruit-dove is the largest Fruit-dove native to Australia. It can be seen in large flocks where food is abundant. The birds feed off fruit-bearing trees in rainforests. They can eat large fruits, such as figs, and are able to acrobatically collect fruit of trees and vines.

They do not travel long distances preferring to stay in their local area.



## Special Thanks to my beta team...

Sandra Castle, Rhonda Gilliland, Kelvin Hughes and Beatrice McKeown. Thanks also to DAZ Productions for their continued support and encouragement with the Songbird ReMix Series. And to B.L.Render for starting the series with me those many years ago.

## Species Accuracy and Reference Materials

Many birds of the same species do vary considerably in color. This package tries to emulate the colors and markings in the most commonly found variants.

The author-artist has tried to make these species as accurate to their real life counterparts as possible. With the use of one generic model to create dozens of unique bird species, some give and take is bound to occur. The texture maps were created in Painter with as much accuracy as possible. Photographic references from photographs from various Internet searches and several field guides were used.

### Field Guide Sources:

- "The Sibley Guide to Birds" by David Allen Sibley.

Wikipedia (<http://www.wikipedia.com>)

BirdGuides.com (<http://www.birdguides.com>)

BirdLife International (<http://www.birdlife.org>)

A special thanks also the contributors of Wikipedia, the Cornell Lab of Ornithology and various bird websites, which were invaluable in preparing this Field Guide.



**Shirts, jerseys, sweatshirts,  
prints, cards, posters, pillows,  
coffee cups, calendars & more**

