

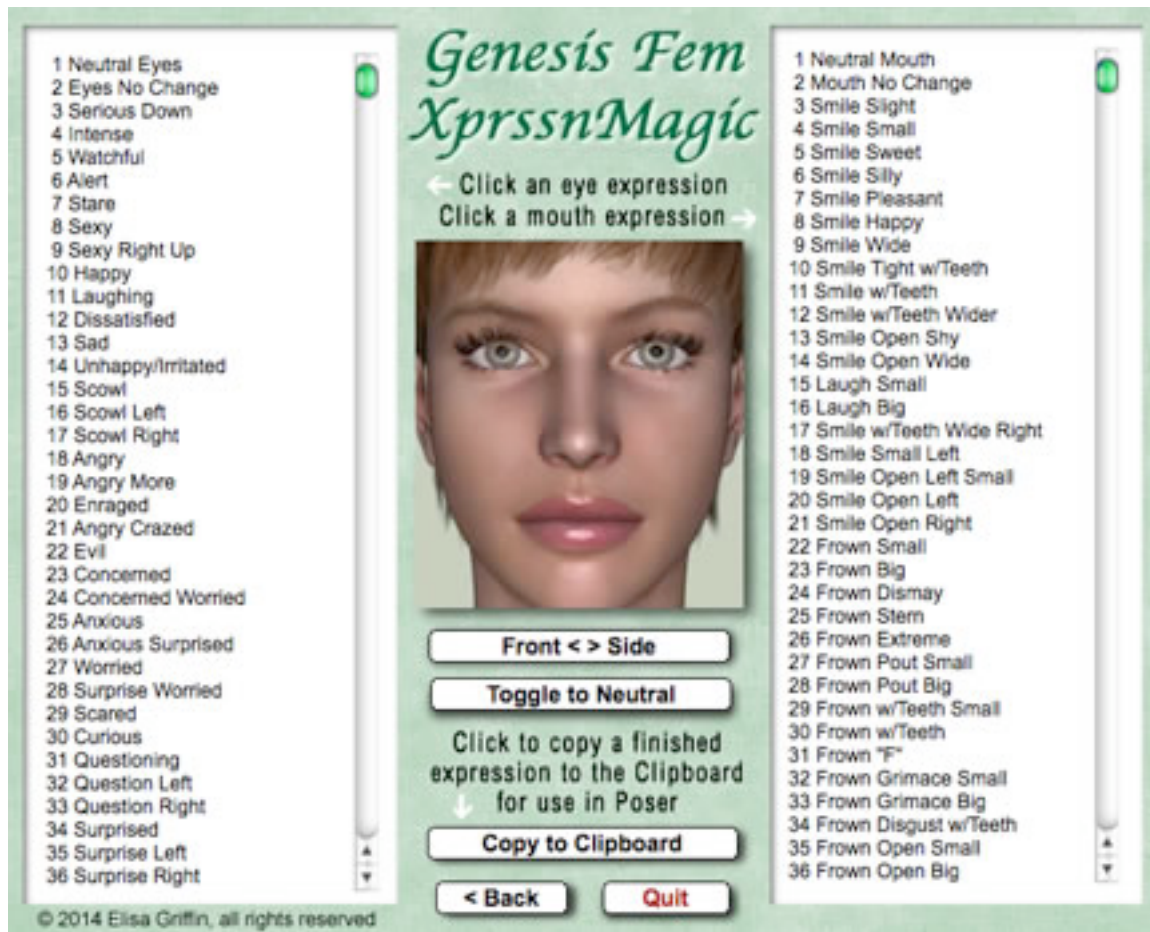
# GenesisFemale-V5XprssnMagic

© 2014 Elisa Griffin, all rights reserved

## Welcome to GenFemV5XprssnMagic!\*

To use this application you need the **Genesis Female** figure that comes with DAZ Studio Starter Essentials. XprssnMagic also includes preview images and specially adjusted morph values for the **Victoria 5** add-on figure.

GenFemV5XprssnMagic lets you copy into Poser or DAZ Studio the morph dial settings from any combination of the 68 eye and 81 mouth poses – giving you thousands of combinations! Existing head position or face-shaping dial settings on the figure are not overwritten by these expression settings.



\* This Adobe Acrobat file is easier to read on-screen if you select "Continuous" from the View menu above. Also turn on "Show Bookmarks" in the Windows menu, so you can quickly jump to a topic.

## Installing the Files

This product comes in three versions: a free-standing version for PCs (GenFemV5XprssnMagicPC), another for Macs (GenFemV5XprssnMagicMac), and a third version (GenFemV5XprssnMagicShockwave.html) which can be run in any web browser that has the free Adobe Shockwave plug-in installed.

Place your preferred **GenFemV5XprssnMagic** file anywhere you find convenient (some PC configurations will not let an application execute in certain locations or external drives (see the [File List](#) at the end of this guide, if you have difficulties).

Note that the [GenFemV5XprssnMagicShockwave.html](#) and the .dcr file must be kept together in the same location (the .dcr can only be run by the .html web browser file) and you must not rename the .dcr file, or the .html file will not be able to find and launch it.

For DAZ Studio users, there is the included [XprssnMagic Importer 4 script](#), which enables pasting XprssnMagic morph dial combination settings to a Genesis Female figure. Place the script in your DAZ Studio My Library's Script folder.

## Using GenFemV5XprssnMagic

**Launch** the program by double-clicking the GenFemV5XprssnMagic icon or by opening the Shockwave html page in your web browser.

1. At the opening screen select either the Genesis Female or Victoria 5 radio button, then click the "Run GenFemV5XprssnMagic" button. This will take you to your choice of the two List/Preview screens.



2. Click one of the eye expressions on the scrolling list at the left. The top half of the preview face frame in the center will show your chosen eye pose.
3. Click one of the mouth expressions on the scrolling list at the right. The bottom half of the preview face frame will show the mouth pose.

4. Click the “Front < > Side” button below the center preview image to see the expression combo from the side. Click the mouse button again to return to the front view. (Some of the eye and mouth previews do not match exactly at the eye/mouth line in the preview window; the actual morph will of course be smooth.)

**Front < > Side**

5. Click and hold the “Toggle to Neutral” button to compare the Xprssn combo with the figure’s neutral face. Release to return to the combo view.

**Toggle to Neutral**

6. When you get a combined expression that you want to transfer into the Genesis Female or V5 figure, make sure you press the “**Copy to Clipboard**” button (otherwise you will paste any previously copied morph settings).

**Copy to Clipboard**

### Using with Poser

1. **Launch Poser.** (If for some reason you can’t run both programs at the same time, just close XprssnMagic; the information will remain in the Clipboard.)
2. In Poser, load the Genesis Female or V5 figure (using the DSON Importer for Poser). On the Parameters Palette **select the Head.**
3. Select **Edit | Paste** from the menu (or use the keyboard paste command Control-V) to set the morph dials values for your chosen expression.
4. If the new Xprssn combo does not appear, click on another body part, then back to the head, to force the screen to redraw – some versions of Poser can be quirky about this.
5. You can now fine-tune the dial settings, if you want to adjust the expression. This may be necessary when the figure’s face has been significantly morphed or if you want to add some asymmetry to the expression.

## Using with DAZ Studio

XprssnMagics work by copying to your computer's **system clipboard** the dial settings for the selected eye-mouth combos. Unlike Poser, DAZ Studio does not let you paste system clipboard data directly to a figure. However, you can do so by way of the included script **XprssnMagic Importer 4**. (See [DAZ Studio Script](#))

1. Follow the script's installation directions.
2. In GenFemV5XprssnMagic, select an eye-mouth combo, click the "Copy to Clipboard" button.
3. In DAZ Studio select the **head** of a Genesis Female or Victoria 5 figure.
4. Run the **XprssnMagic Importer 4** script, which will bring up a window.
5. Click inside the script window and paste.
6. Click the "**Apply**" button. The window will close and the Xprssn will be applied.

## Shockwave Version

To use the Adobe Shockwave version, open in your web browser the file GenFemV5XprssnMagicShockwave.html. It and the dependent file GenFemV5XprssnMagicShockwave.dcr must be in the **same** location (anywhere convenient) and you must **not** rename the .dcr file, or the .html file will not be able to find and launch it.

Use the Shockwave version with DAZ Studio or Poser as instructed above.

You must have a current version of **Adobe Shockwave Player** (not to be confused with the Adobe Flash Player) installed in your web browser.

If needed, use this link to get the Shockwave Player (or go to adobe.com and search for "Shockwave") Follow directions to download and install the appropriate player for your operating system and browser(s):

<http://www.adobe.com/shockwave/download>

## The “Neutral” vs. “No Change” Poses

At the top of the eye and mouth pose lists are both a neutral pose, which sets all that list’s expression morph dials to zero, and a no change pose (a grey image with “No Change” text), which does not copy any settings for that list’s expression dials. Together, they give you greater control of the figure’s expression morphs.

- The **Neutral Eyes** pose allows you to **zero** any eye expression settings on the figure, independent of your choice on the mouth expressions list.
- The **Eyes No Change** pose leaves an existing eye expression **unchanged**, while allowing you to set a new expression for just the figure’s mouth.
- The **Neutral Mouth** pose allows you to **zero** any mouth expression settings on the figure, independent of your choice on the eye expressions list.
- The **Mouth No Change** pose leaves an existing mouth expression **unchanged**, while allowing you to set a new expression for just the figure’s eyes.

## Visemes

The 16 speech viseme morphs are included at the bottom of the mouth list and can be used with any eye xprssn. (M and SH may be particularly useful.)

Like the other mouth xprssns, they are set to zero when the Neutral Mouth is selected, but not affected when Mouth No Change is selected.

## Auto Zero Set of Some Dials

Be aware that the 4 full face, 2 nose and 3 cheek morphs are automatically set to zero whenever you paste from GenFemV5XprssnMagic (even when EyesNoChange and MouthNoChange are selected), since any pre-existing settings on these dials would alter both your chosen eye and mouth Xprssns.

If you want, you can add a setting to any of these dials after applying the Xprssn. The dial’s value will be set back to zero if you paste in another Xprssn.

Face-shaping and head positioning dials will be unaffected by a pasted Xprssn.

See the [GenFemV5XprssnMagic Morph Dials](#) lists at the end of this guide for complete information.

## Xprssns On Other Figures

These Xprssn settings for the Genesis Female and Victoria 5 have been optimized for these figures. They can be applied to other **Genesis** figures, but may require significant adjustments. This is done for the Genesis Male and Michael 5 figures by my product **GenMaleM5XprssnMagic**.

Some of the internal morph dial names on the **Genesis 2** figures are the same as the Genesis figures and some differ. Thus, Xprssns from this product will be applied to them only in part or not at all

I attempt to use the same eye and mouth xprssn **names** and organization on my various XprssnMagic products, for ease of use.

However, individual morph shapes (and the limits placed on morph dials) vary significantly between figures, so that similarly named xprssns may be only approximations of each other. Some are only as good as can be made within the constraints of a figure. Of course, some figures come with more morphs, allowing additional combinations.

## Why So Many Combinations?

We humans are sensitive to extremely subtle differences in expressions, conveying a wide range of emotions. Simply setting a smile morph on the mouth of figure, for example, usually does not give a believable, realistic smile. In fact, a smile without even the smallest change in eye expression gives us the feeling that the character's response lacks warmth and authenticity (which may occasionally be the effect you're after).

Seldom are our expressions perfectly symmetrical on the right and left sides, and the asymmetry of these poses also can convey emotional subtleties.

By having many variations available you can create an expression that fits a particular situation. You also can avoid using the same stock expression on all the characters in a scene or on one figure in a series of images or an animation. Also, one variation of an expression may look better from a particular angle than another.

The more extreme expressions may be needed for a full-body or distance shot or cartoon situations, while more subtle variations are useful for close-ups.

You may have to experiment to find the expression that sets the mood you want for your character. Of course, you can further adjust an expression in DAZ Studio or Poser and save it in the library for future use.

## The Names Are Guides Only

Don't rely too much on the eye and mouth names when creating your expressions. Sometimes we convey complex or conflicted emotional messages by "mismatching" expressions on the upper and lower halves of our faces.

You will find that using a "smile" expression will give your characters a very different mood when teamed with an "angry" or "suspicious" eye setting than it does when used with a "happy" or "stare" one. A silly smile can turn sinister when paired with a particular eye pose.

## GenFemV5XprssnMagic Morph Dials

The following 108 morphs are used by GenFemV5XprssnMagic. When you apply a GenFemV5XprssnMagic xprssn to the Genesis Female or Victoria 5 figure, any existing settings for *only* these dials will be overwritten. Any dials not listed will be unchanged. (Note that these are the morph dial names, not the internal morph names used by XprssnMagic.)

### Genesis Female Eye Expression Morph Dials (42):

|                       |                          |                        |
|-----------------------|--------------------------|------------------------|
| Brow Down             | Brow Outer Up Right      | Eyelids Top Down       |
| Brow Down Left        | Brow Squeeze             | Eyelids Top Down Left  |
| Brow Down Right       | Brow Up                  | Eyelids Top Down Right |
| Brow Inner Down       | Brow Up Left             | Eyelids Top Up         |
| Brow Inner Down Left  | Brow Up Right            | Eyelids Top Up Left    |
| Brow Inner Down Right | Cheeks Eye Flex          | Eyelids Top Up Right   |
| Brow Inner Up         | Cheeks Eye Flex Left     | Eyes Closed            |
| Brow Inner Up Left    | Cheeks Eye Flex Right    | Eyes Closed Left       |
| Brow Inner Up Right   | Eyelids Bottom Down      | Eyes Closed Right      |
| Brow Outer Down       | Eyelids Bottom Down Left | Eyes Side-Side         |
| Brow Outer Down Left  | Eyelids Bottom Down Rt   | Eyes Squint            |
| Brow Outer Down Right | Eyelids Bottom Up        | Eyes Squint Left       |
| Brow Outer Up         | Eyelids Bottom Up Left   | Eyes Squint Right      |
| Brow Outer Up Left    | Eyelids Bottom Up Right  | Eyes Up-Down           |

### Genesis Female Mouth Expressions Morph Dials (57):

|                       |                       |                  |
|-----------------------|-----------------------|------------------|
| Cheeks Balloon        | Lip Bottom Down       | Lips Part Center |
| Cheeks Balloon Pucker | Lip Bottom Down Left  | Lips Pucker      |
| Jaw In-Out            | Lip Bottom Down Right | Lips Pucker Wide |
| Jaw Side-Side         | Lip Bottom In         | AA               |
| Mouth Corner Up-Down  | Lip Bottom In Left    | EH               |
| Mouth Frown           | Lip Bottom In Right   | ER               |
| Mouth Narrow          | Lip Bottom Out        | F                |
| Mouth Narrow Left     | Lip Bottom Out Left   | IH               |
| Mouth Narrow Right    | Lip Bottom Out Right  | IY               |
| Mouth Open            | Lip Bottom Up         | K                |
| Mouth Open Wide       | Lip Bottom Up Left    | L                |
| Mouth Side-Side       | Lip Bottom Up Right   | M                |
| Mouth Side-Side Left  | Lip Top Down          | OW               |
| Mouth Side-Side Right | Lip Top Down Left     | S                |
| Mouth Smile           | Lip Top Down Right    | SH               |
| Mouth Smile Open      | Lip Top Up            | T                |
| Smile Simple          | Lip Top Up Left       | TH               |
| Smile Simple Left     | Lip Top Up Right      | UW               |
| Smile Simple Right    | Lips Part             | W                |

### Genesis Female Morphs Set To Zero (9)

GenFemV5XprssnMagic **automatically sets to zero** any values on these nine morph dials whenever you paste, since pre-existing settings on them would alter your chosen Xprssn.

Full Face (4): Angry, Concentrate, Fear, Glare

Nose (2): Nose Wrinkle, Nostrils Flare

Cheeks (3): Cheeks Flex, Cheeks Flex Left, Cheeks Flex Right

*Note:* these dials will be set to zero even when you have Eyes No Change, Mouth No Change or both selected.

After pasting in an Xprssn you can add settings on any of these dials, but they are automatically re-set to zero when you paste another Xprssn:

### Other (Unaffected) Morphs

Settings on your figure's **head position**, **scale** and **face-shaping** dials are not affected by GenFemV5XprssnMagic, including:

Cheeks Crease, Cheeks Crease Left, Cheeks Crease Right



## Pose Interference

Be aware that some careless creators of body or face-shaping poses include all the head morphs in their poses, even when the expression morphs are set to zero. Using such a pose will overwrite a GenFemV5XprssnMagic xprssn you have previously applied to your figure. If you find this happening, first apply the body pose and then the GenFemV5XprssnMagic xprssn (which does not affect any head position settings or the morph dial settings of other body parts).

## DAZ Studio Script

To use GenFemV5XprssnMagic in DAZ Studio you must use the script **XprssnMagic Importer 4**, included in this product's file downloads.

The first version of this script for DAZ Studio 2 was written and shared by **Guandalug la'Fay** in 2007. It has been updated and adapted for DAZ Studio 4 by **Richard Hazeltine**. Many thanks to both for their generosity to our community.

## File List

Most users can place these files anywhere convenient:

**GenFemV5XprssnMagicPC** (free-standing application for PCs)  
**GenFemV5XprssnMagicMac** (free-standing application for Macs)  
**GenFemV5XprssnMagicGuide.pdf** (this Adobe Acrobat user guide)

The files for the Shockwave version can also be placed anywhere, but they must be located *together*:

**GenFemV5XprssnMagicShockwave.html** (to be opened in a web browser)  
**GenFemV5XprssnMagicShockwave.dcr** (runs within the .html file)

*For DAZ Studio* - place this script in your DAZ Studio Library's Script folder:  
**XprssnMagic Importer 4** (run in DAZ Studio to import xprssn settings)

*Note:* Some PC security configurations will not let an application execute in certain locations or from external drives. First check that the location is not set for Read Only. Try moving GenFemV5XprssnMagicPC into the Programs folder.

Some international users may have to set their system to U.S. English.

**Thank you for purchasing GenFemV5XprssnMagic!**

At [daz3d.com](http://daz3d.com) you will find XprssnMagics for other popular figures, including the Genesis Male & Michael 5, Genesis 2 Female & Victoria 6, Genesis 2 Male & Michael 6, the Generation 4 figures and others. Elisa Griffin / gryffnn