

Avian Models for 3D Applications
by Ken Gilliland

Songbird ReMix **CORYUS CORYUS**

Contents

Manual

Introduction	3
Overview and Use	3
Conforming Crest Quick Reference	4
Tips and Tricks	4
Creating a Songbird ReMix Bird	5
Using Conforming Crests with Poser	6
Using Conforming Crests with DAZ Studio	7

Field Guide

Field Guide List	8
Australian Raven	9
Common Raven	10
American Crow	12
Common or Western Jackdaw	13
‘Alala - Hawaiian Crow	14
Credits and Resources	15

Copyrighted 2013 by Ken Gilliland
www.SongbirdReMix.com

Opinions expressed on this booklet are solely that of the author, Ken Gilliland, and may or may not reflect the opinions of the publisher, DAZ 3D.

Songbird ReMix **CORYUS CORYUS**

Introduction

Ravens and crows through the ages have represented the darker and sometimes, playful elements in human cultures. In Irish mythology, crows are associated with Morrigan, the goddess of war and death while the Norse believed that ravens carry news to the god Odin about the mortal world. In Hawaiian, Aboriginal and Native American cultures, crows and ravens are believed to be embodiments of ancestor's spirits or sometimes "The Trickster"; a deity that breaks the rules of the gods or nature, sometimes maliciously but usually with ultimately positive effects. The collective name for a group of crows is a "murder of crows".


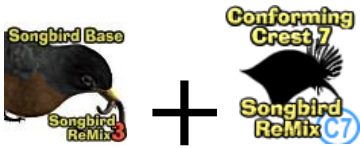

Ravens and crows are now considered to be among the world's most intelligent animals. Recent research has found some species capable of not only tool use but also tool construction.

Overview and Use

Select **Figures** in Runtime Folder and go to the **Songbird ReMix** folder. Here you'll find an assortment of files that are easily broken into 2 groups: **Conforming Parts** and **Bird Base models**. Let's look at what they are and how you use them:

- **Bird Base Models**
 - **Songbird ReMix3 Base** - This model is used with all ravens and crows.
- **Conforming Parts** - (All Conforming Crests have alpha-numeric icons in the lower right corners such as "C02", "C07" or "T4". This corresponds with characters in the Pose folders. All MAT/MOR files with the same icon use that particular Conforming Part. ***Be sure to read this:*** Most conforming parts are Crest which covers the head part. When posing the Base Model, the Conforming Part will follow any Bend, Twist or Rotate Commands. It will not obey any **SCALE** or **MORPH** commands you give the Base Model. You must manually scale the Conforming Part and with morphs such as "OpenBeak" you must also set its counterpart in the head part of the Conforming Crest. So Now let's look at what's included in Conforming Parts:
 - **<C15> Crest 15** for use with the Common Raven and the Australian Raven. 8 morphs can be found in the **Head** section. Be sure to use the "RaiseUpperBeak" morph in unison when using the parent model's "RaiseUpperBeak" morph.

Conforming Crest Quick Reference

Load Model(s)	To Create... (apply MAT/MOR files)
	<ul style="list-style-type: none"> American Crow Common Jackdaw Hawaiian Crow
	<ul style="list-style-type: none"> 'Alala (Hawaiian Crow)
	<ul style="list-style-type: none"> Australian Raven Common Raven

Tricks and Tips

There are several good practices to follow when posing a Songbird ReMix bird.

- BODY vs. Hip parameters...
 - Never use X-Y-Z Translation in the HIP section to place the bird—instead use the BODY X-Y-Z Translation
 - To Rotate the bird use yRotate in the BODY section
 - To make a bird more upright, use the Bend parameter in the Hip Section.
 - Use the Hip's Bend, Twist and Side Parameters to shift body weight when IK is being used.

Creating a Songbird ReMix Bird

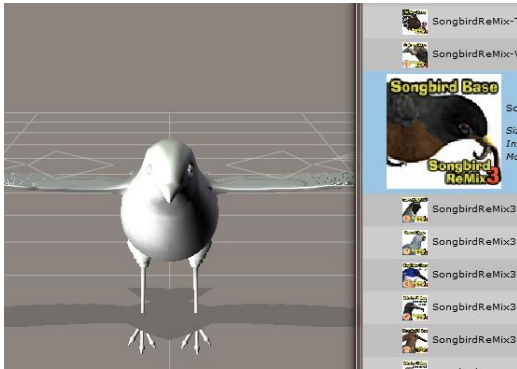
1. Choose what you want to load. For this example, we'll create a Vulture species.
2. Load Poser or DAZ Studio and select **FIGURES** and the Songbird ReMix folder. DAZ Studio users will select the "Poser Formats" → "My Library" → "FIGURES" → "Songbird ReMix".
3. Because all of the Vultures use a "Vulture" base model we'll load either the SongbirdReMix-Vulture or the SongbirdReMix-Vulture2.
4. Go to the **POSES** folder and **Songbird ReMix** Master folder, then select the appropriate Songbird Remix library. This again, for DAZ Studio users will be found in the "Poser Formats" file section.
5. Select one of the Vulture Species and click on it to apply it to the Songbird ReMix base model. This species pose contains morph and texture settings to turn the generic model into the selected Vulture. It will automatically apply the correct DAZ Studio material settings if you are using DAZ Studio.

Updates and Freebies

The Songbird ReMix series is constantly growing and improving. New morphs and additions to upcoming and future products often end up benefiting existing sets with new geometry, morphs and textures.

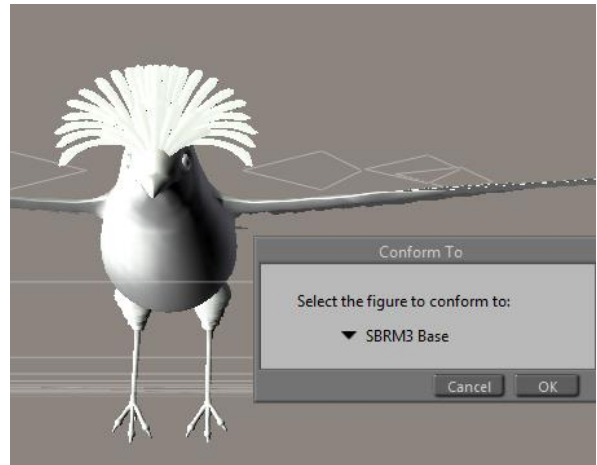
Songbirdremix.com always has the latest updates and additions to existing Songbird ReMix products (often months before they are updated at DAZ), plus the latest digital and real bird news, tutorials, videos, all the Field Guides, free bird characters, props and much more at www.songbirdremix.com

How to build a Songbird ReMix Character with a Conforming Crest in Poser

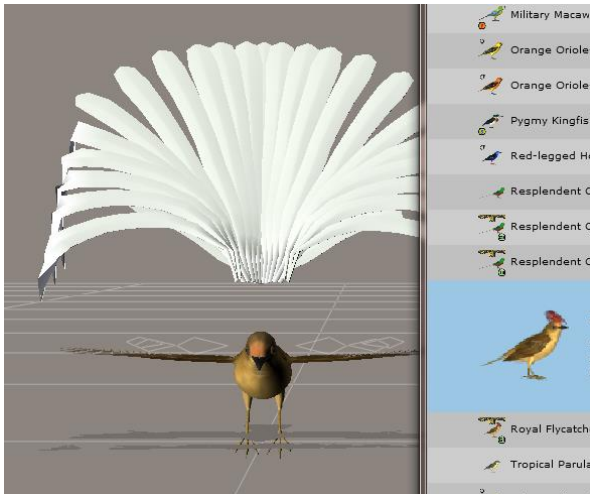


1. In the Figures section, load a Bird base Model. Then load the appropriate conforming part for the bird you're trying to create.

2. **Conform** it to the bird base model.



3. Select the Base Model and go to **POSES**. Select and apply the appropriate Character/Material pose setting for the bird you're creating.



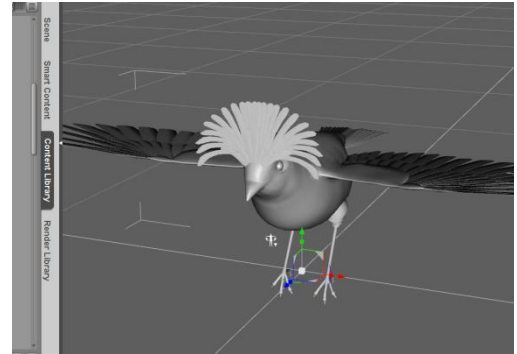
4. The Conforming part will look wrong. That's okay—we're going to fix that now. Select the conforming part and apply appropriate Character/Material pose for the part.

5. Voila! Your bird is done. Just remember to select the bird base when posing and often there are additional morphs in the conforming part you can use.

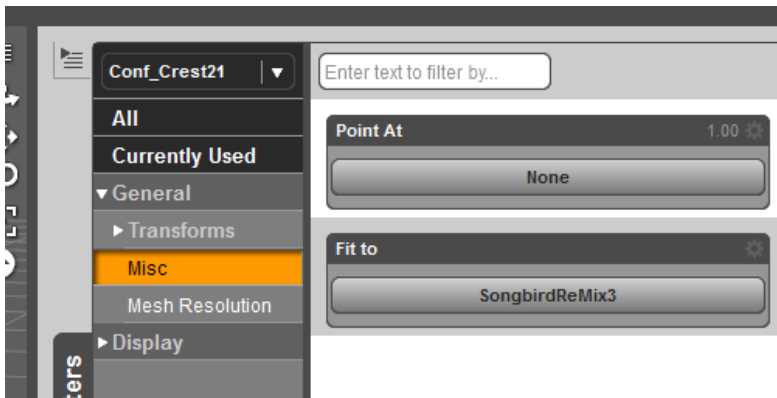


How to build a Songbird ReMix Character with a Conforming Crest in DAZ Studio

In the **Runtime** folder, select **Figures** and load the Songbird ReMix Model and the appropriate Conforming Crest in Studio. Select the Conforming Crest by selecting on the screen or in the **Scene** Tab.



Now, using the "FIT TO" command in the Parameters Tab, Select the Songbird ReMix Model. Go back to the **Scene** Tab and select the Songbird ReMix Model.

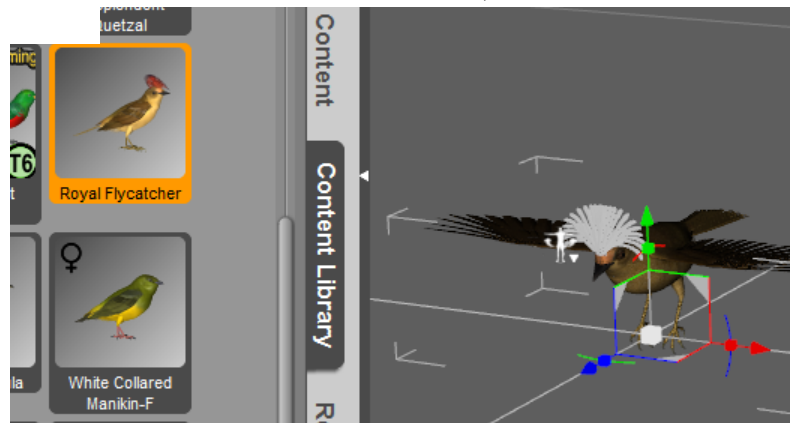


Select the Studio **Content** Folder and go to the **Animals : SBRM :** **!CreateYour Own : Characters** folder and select the appropriate Songbird Remix library. Apply the Character setting to the bird base. It will probably reduce the size significantly and change the shape of the bird.

Now that the bird is sized, select the

conforming part and apply the conforming part character settings.

Voila! Your bird is done. Just remember to select the bird base when posing and often there are additional morphs in the conforming part you can use.



Songbird ReMix **CORYUS CORYUS**

Field Guide

Australian Raven

Common Raven

American Crow

Common or Western Jackdaw

‘Alala - Hawaiian Crow

Common Name: Australian Raven
Scientific Name: *Corvus coronoides*

Size: 18-21 inches (46-53 cm)

Habitat: Australia; Endemic--not common throughout eastern, southern Australia and southern Western Australia (the populations being connected by a narrow strip across the Nullarbor Plain) but is found in the far north. It has adapted very well to human habitation in some cities and is a common bird in urban Sydney, and Rottneest Island. It is omnivorous and has adapted well to urban environments and is a common city bird in Sydney and Canberra.



Status: Least Concern. **Global population:** Unknown.

Diet: Carrion, insects, seeds, fruit, small reptiles, nestlings and eggs. The preference ratio is 34% carrion, 42% invertebrates and 24% plant material. Food is taken mainly from the ground but will

occasionally feed in trees. Ravens have adapted well to eating rubbish and scraps in urban areas, such as school playgrounds. In one isolated study they were observed feeding on nectar from eucalypt flowers.

Nesting: Breeding season is from July to September. Ravens always nest in tall trees, never near to the ground as some species do. Nests are generally large and untidy, consisting of a bowl or platform of sticks lined with grasses, barks, and feathers. A clutch can comprise 3–6 eggs, though usually 4 or 5 are laid. Measuring 45x30 mm (1¾ x 1¼ in), eggs are pale green or bluish-green splotched with darker olive, brown and blackish markings. Incubation of the eggs is done solely by the female over roughly 20 days. Only one brood is raised per year. Fledged by 45 days and staying with parents for about four months after that.

Cool Facts: One of three Australian species commonly known as ravens. It is a more slender bird than the Common Raven of the Northern Hemisphere but is otherwise similar.

Common Name: Common Raven

Scientific Name: *Corvus corax*

Size: 22-27 inches (56-69 cm)

Habitat: North America and Eurasia, southward into Central America and northern Africa.

Status: Least Concern. **Global Population:** 16,000,000 mature individuals. The Common Raven had nearly disappeared from the northeastern United States in the early part of the 20th century. Its numbers in that area increased markedly in the last half of the century, and it is reoccupying much of its former range. Because of small



population sizes in much of the East, it is listed as endangered or threatened in a number of states. Populations have been increasing all across the range, especially in the West where it has taken advantage of human-modified habitats.

Diet: Meat, eggs, insects, grain, fruit, garbage and carrion.

Breeding: The raven often uses sheep wool to line its nest. When the female leaves the nest for a while she may cover the eggs with the wool. The nest is usually placed on a cliff or in tree, but has also been found in man-made structures such as telephone poles and abandoned cars.

Cool Facts: The largest of the songbirds, the raven is one of the most widespread species in the world. The raven is perhaps the smartest of all birds. It has been documented that Ravens carry “favorite” sticks with them that they use as tools to spear grubs. They are known to drop hard-to-crack nuts into crosswalks, let the cars run them over and then wait for a red light to collect their meal.

Breeding pairs will hold territories and try to exclude all other ravens throughout the year. Intruders who discover food within another bird’s territory may call to other ravens to swamp the territories defenses to steal the food.

Continued urban development has helped the raven populations to increase causing significant negative effects on the populations of endangered desert tortoises and Least Terns. Ravens have also been implicated in causing power outages by contaminating insulators on power lines, fouling satellite dishes at the Goldstone Deep Space Site, peeling radar absorbent material off buildings at the China Lake Naval Weapons center, pecking holes in airplane wings and even stealing golf balls.

Common Name: American Crow
Scientific Name: *Corvus brachyrhynchos*

Size: 16-21 inches (40-53cm)

Habitat: North America; throughout the United States and Canada with the exception of desert areas. Found in areas of open ground and scattered trees.

Status: Least Concern. **Global Population:** 31,000,000 mature individuals. Populations are common and widespread with a slight increase since 1950. Populations may decrease due to the high susceptibility from West Nile Virus.



Diet: Seed, grain, carrion and trash. Forages on the ground.

Breeding: Large open cup of sticks lined and grass and mud. Three to six pale blue-green eggs with brown markings. While the sexes look the same, male crows are slightly larger than females.

Cool Facts: While crows are carrion eaters

they are not specialists at being scavengers. Their bills are not strong enough to break through the skin of road kill mammals; they must wait for others to open up their meal or wait for the carrion to decompose.

American Crows communally roost. Roosting areas are established and often are used for decades. Some are reported to be hundreds of years old. Roosts can be of a few hundred, several thousand, or even up to several million crows.

Crows often lead a double life. They may spend part of the day at home with its family in town and the rest of the day with a flock feeding in the country.

Common Name: Common or Eurasian Jackdaw
Scientific Name: *Corvus monedula*

Size: 13 inches (34cm)

Habitat: Eurasia and Northwest Africa. Found in open woodland, farmland and urban settings.

Status: Least Concern. **Global Population:** 20,000,000 –100,000,000 Mature individuals.



Diet: Invertebrates, fruit, seeds, carrion, small vertebrates, eggs and nestlings.

Breeding: Four to five eggs nests in colonies in cavities of trees, cliffs or ruined buildings and sometimes in dense conifers One brood per year.

Cool Facts: The jackdaw is one of the smallest species from the Crow family.

They are sociable birds, couples traveling together in larger flocks.

“The complex social interactions that occur in groups of Jackdaws was studied by Konrad Lorenz and a detailed description of the Jackdaw's social behavior is described in his book "King Solomon's Ring". Lorenz put colored rings on Jackdaws' legs so that individual birds could be easily identified and he caged them in the winter because of their migration from Austria. Lorenz observed Jackdaws' hierarchical group structure with dominance of the higher-ranking birds over others. He noticed Jackdaws' strong male–female bonding and that each bird of a pair occupy about the same position in the hierarchy. He reported that a low-ranked female Jackdaw rocketed up the Jackdaw social ladder when she became the mate of a high-ranking male. He also described some Jackdaw calls.” (Wikipedia)

Hawaiian Name: 'alala

Common Name: Hawaiian Crow

Scientific Name: *Corvus hawaiiense*

Size: 19-20 inches (48-50 cm)

Habitat: Oceania; Hawaiian Islands. Last found on the island of Hawai'i in open montane forests. Fossil evidence shows that the crow was once found in abundance throughout the islands.

Status: **Extinct in the wild (2002).** **Global Population:** 77 mature individuals. The reason for its decline and extinction in the wild is unknown, although avian malaria passed by the non-endemic mosquito is believed to be a contributing factor.

Diet: A varied diet, including carrion, eggs and nestlings, other small creatures, fruits, and even human food and scraps.

Nesting: Nests are always found in trees with both males and females participating in nest construction.

Females generally lay five eggs; the eggs may be incubated by either parent, with the other bird usually sitting quietly near its brooding mate.

Cool Facts: The 'Alala is similar to the mainland crows except it has more rounded wings and a much thicker bill. Its plumage is a soft, brownish-black with long, bristly throat feathers. Its legs and bill are jet black.



The last two known wild individuals of this species disappeared in 2002. There are some individuals in captive breeding facilities, but attempts to reintroduce captive-bred birds into the wild have been hampered by predation by the Hawaiian hawk or 'lo (which is also endangered). While some scientists believe that the small number of remaining individuals may be too small to offer a diverse gene pool, the San Diego Zoological Society's breeding program produced 11 new fledglings in 2010 giving this species hope to survive.

'Alala means to cry, crow or caw. Also 'Ala means to rise and la means the sun and refers to the flocks of birds which would start calling noisily at dawn.

Special Thanks to...

....my beta team (FlintHawk, Kat, Linda, Jan, Rhonda and Sandra)

Species Accuracy and Reference Materials

Many birds of the same species do vary considerably in color. This package tries to emulate the colors and markings in the most commonly found variants.

The author-artist has tried to make these species as accurate to their real life counterparts as possible. With the use of one generic model to create dozens of unique bird species, some give and take is bound to occur. The texture maps were created in Painter with as much accuracy as possible. Photographic references from photographs from various Internet searches and several field guides were used.

Sources for this Bundle and Field Guide

Books, Magazines and Papers

- "The Sibley Guide to Birds" by David Allen Sibley. Allred A. Knopf, New York 2001
- "Birds of Hawaii and the Tropical Pacific" by H. Douglas Pratt, Phillip L. Bruner and Delwyn G. Berrett, Princeton Press, 1989.
- "Birds of Australia" by Ken Simpson and Nicolas Day. Princeton University Press
-

Websites

- Wikipedia (<http://www.wikipedia.com>)
- Birdlife International (<http://www.birdlife.org>)
- US Fish and Wildlife Pacific Islands (<http://www.fws.gov/pacificislands>)

**Shirts, jerseys, sweatshirts,
prints, cards, posters, pillows,
coffee cups, calendars & more**



**Songbird
ReMix**
www.empken.com/store