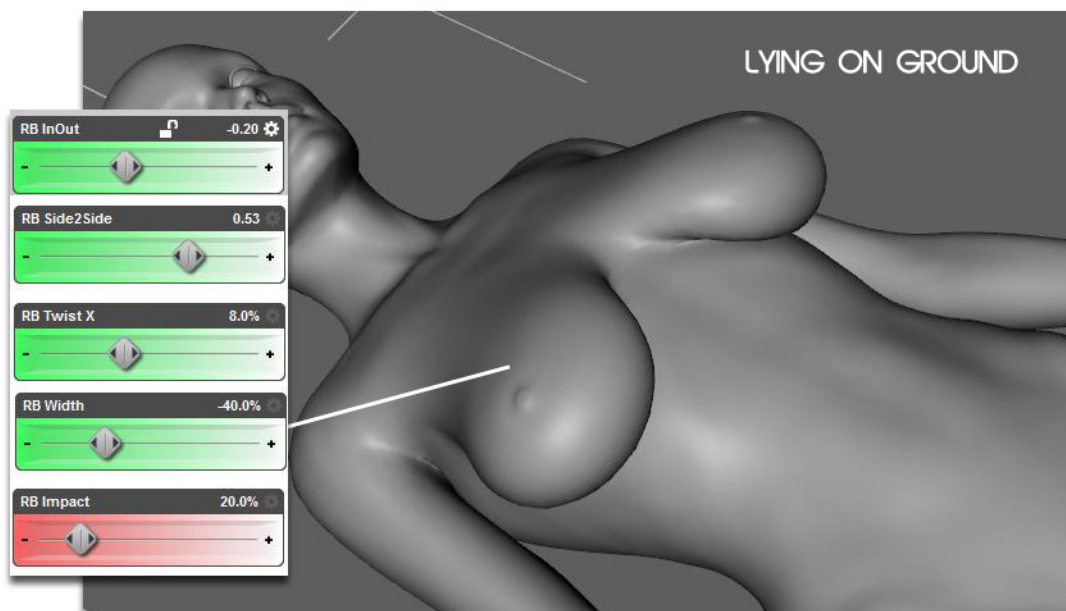
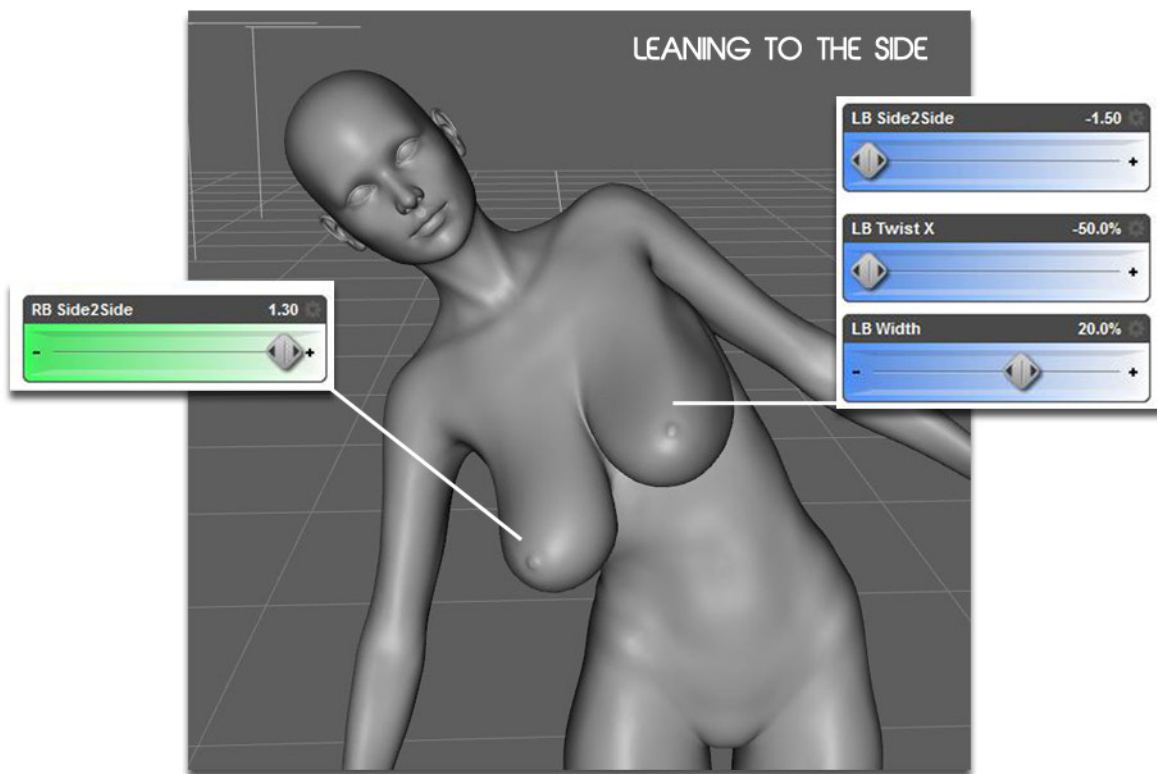
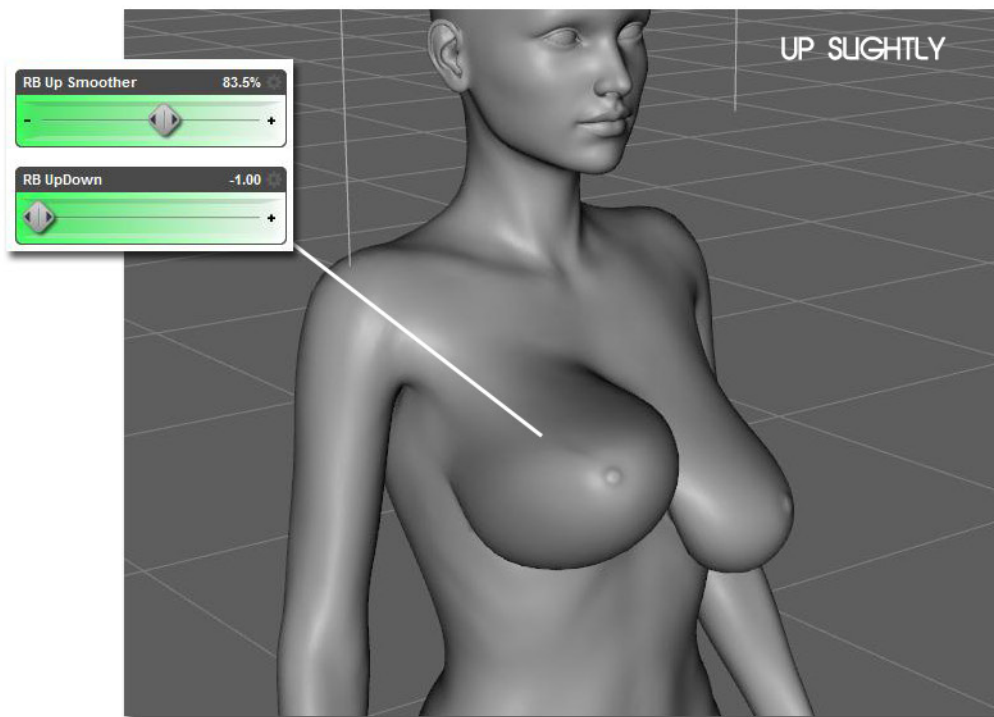
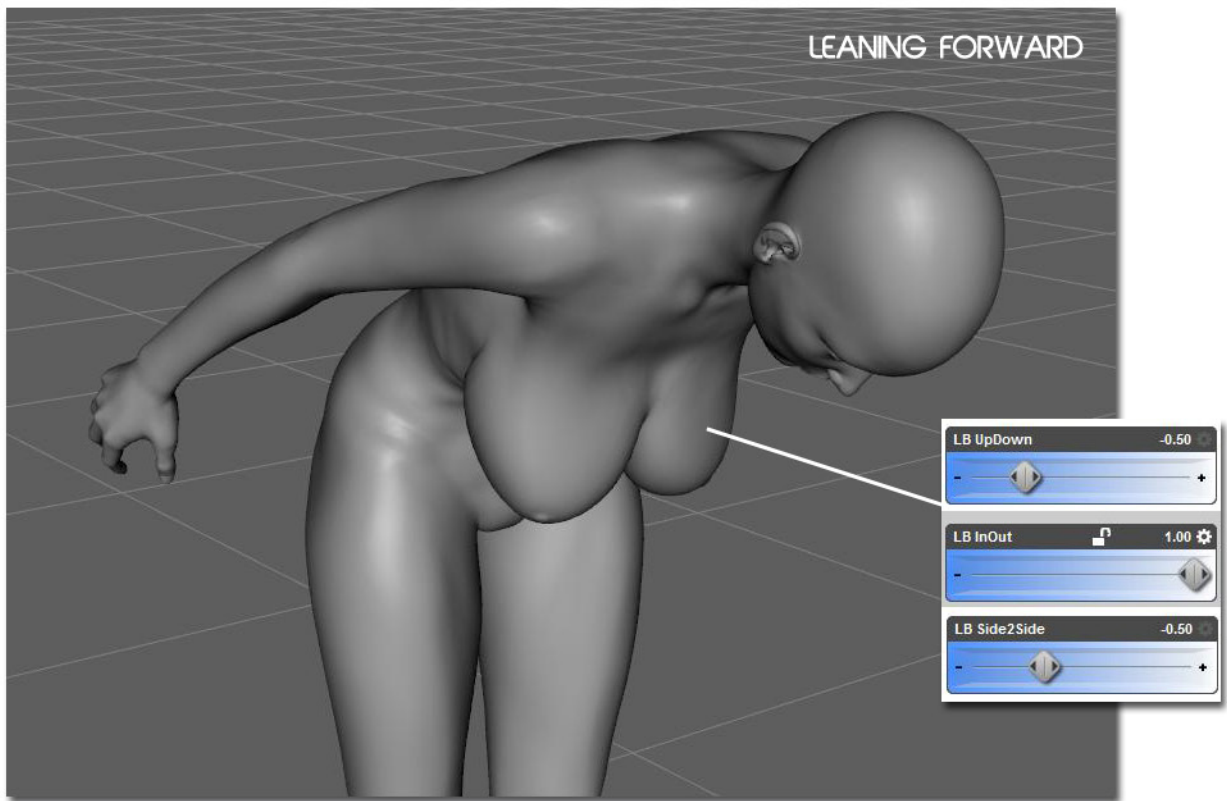


GLUTE & BREAST MOVEMENT

HOW TO USE THE MORPHS

THIS MOVEMENT SYSTEM IS DESIGNED TO CATER FOR ALL GENESIS BREAST/GLUTE SHAPES. IN ORDER TO DO THAT, CERTAIN MORPHS HAVE TO BE COMBINED IN ORDER FOR IT TO LOOK RIGHT. HERE ARE A FEW EXAMPLES OF HOW THESE MORPHS CAN BE COMBINED FOR BEST RESULTS IN CERTAIN POSITIONS. VALUES WILL VARY ACCORDING TO SHAPE, BUT THE BASIC PRINCIPLE STAYS THE SAME AS WELL AS FOR THE GLUTE.



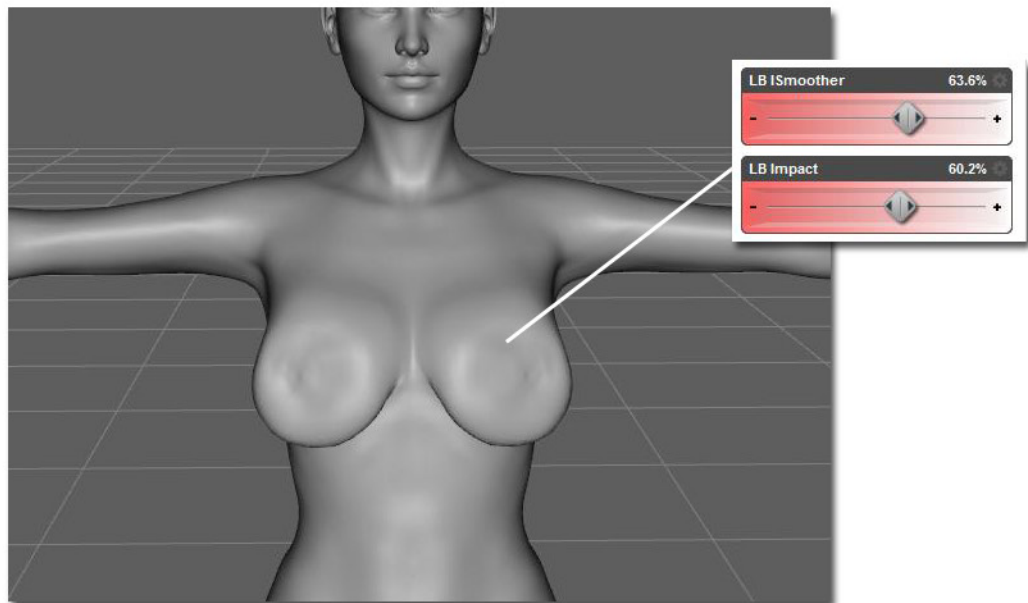


IN THE EXAMPLE ABOVE, A SMOOTHER MORPH IS USED. THEIR FUCTION IS SIMPLY TO ELIMINATE ANY ANOMALIES CAUSED BY VARIOUS SHAPES. INSTEAD OF CREATING INDIVIDUAL MORPHS FOR EACH SPECIFIC SHAPE, THE SMOOTHER MORPHS ACTS AS A BLENDER THAT IS DESIGNED TO SMOOTH OUT ANY UNDESIRED RESULTS.

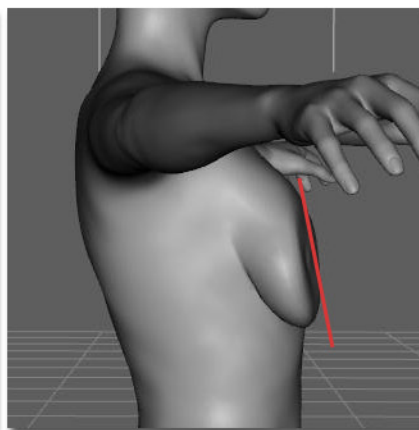
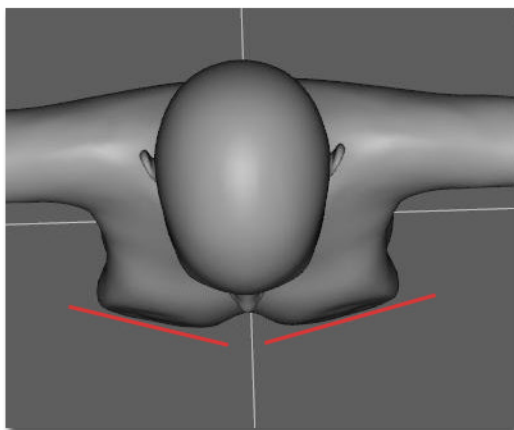
SO AS YOU CAN SEE, THE MORPHS ARE PRETTY STRAIGHT FORWARD TO USE. LET US NOW SEE HOW THE IMPACT MORPHS WORK.

USING IMPACT MORPHS

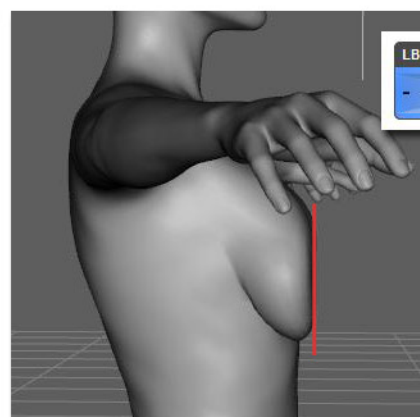
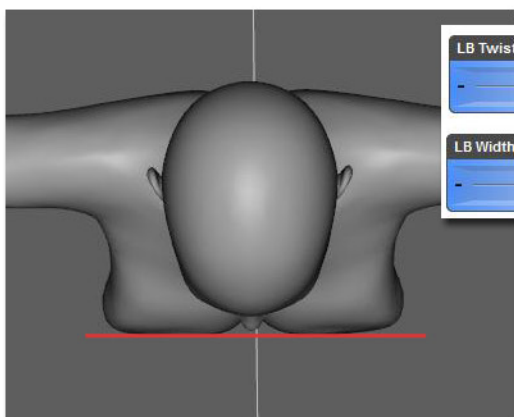
DEPENDING ON THE BREAST SHAPE USED, IMPACT MORPHS CAN GIVE DIFFERENT RESULTS. TO GET THE DESIRED RESULT, SOME MORPHS HAVE TO BE COMBINED.



IN THE ABOVE EXAMPLE, THE IMPACT MORPH IS DIALED TO THE NEEDED STRENGTH. THE **IMPACT SMOOTHER** MORPH'S PURPOSE IS TO SMOOTH OUT THE FRONT AREA. DIFFERENT SMOOTHER MORPHS WORK FOR DIFFERENT SHAPES. DIAL TO SEE WHAT ONE GIVES THE BEST RESULTS. THEY CAN ALSO BE COMBINED.



SOMETIMES WHEN USING THE IMPACT MORPH, THE SURFACE IS NOT FLAT AS SEEN HERE. IN ORDER TO CORRECT THIS, ADDITIONAL MORPHS NEED TO BE DIALED. THE RESULTS ARE DIFFERENT WITH VARIOUS SHAPES BUT CAN BE FIXED BY DOING THE FOLLOWING



SO BY ADJUSTING ONE OR TWO EXTRA MORPHS, YOU CAN GET A NICE FLAT SURFACE

THAT CONCLUDES THIS TUTORIAL HAVE FUN!)