

# Actual Hair Genesis

## User Guide

Actual Hair has a substantial amount of dials to work with which can be a bit overwhelming. This guide will show you the fast and easy way of using Actual Hair and the more advanced way that allows you to create your own styles.

**Fast & Easy**  
[Go to Advanced](#)

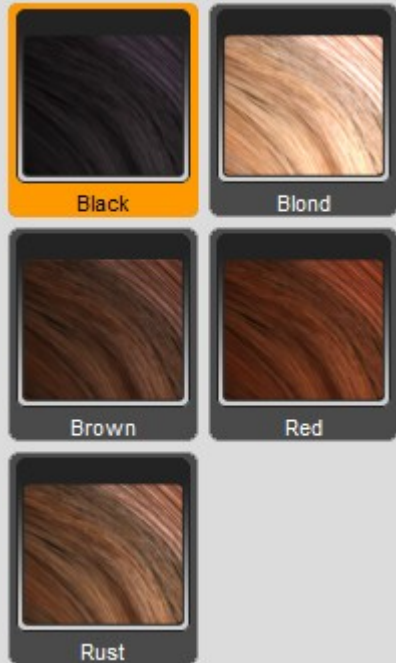
Set up your scene and lighting



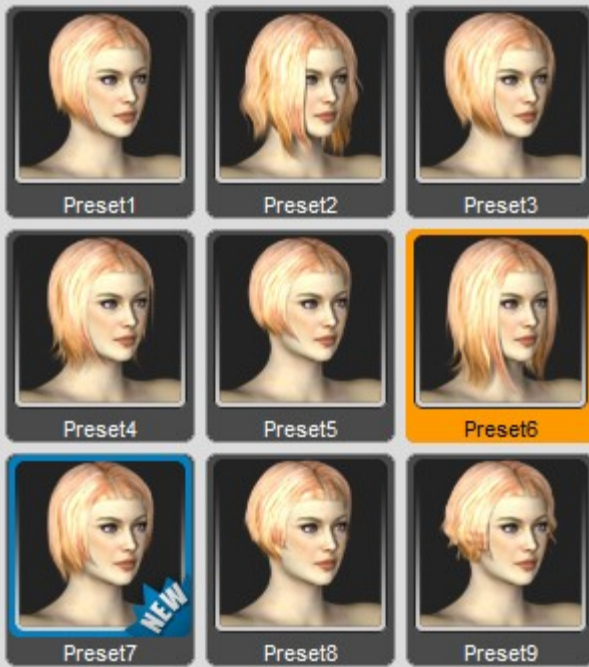
With Genesis selected load Actual Hair



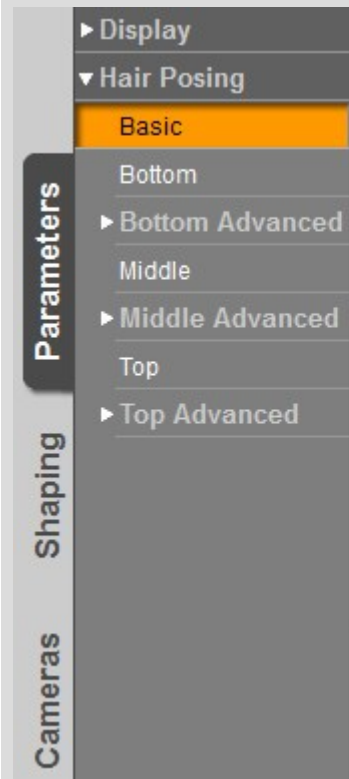
Pick a color (you can choose a different color for the base, middle and top layer, but since this example is an Asian character I'm picking overall black)



Choose a preset style, I'm going with 6 for this example



Adjust with the 'Basic' dials, in this case I have a character with her head slightly bend forward and to the right, so I dial 'Hair Front' and 'Hair Right' up from the Basic dials set to adjust the hair to a natural flow.



Render.



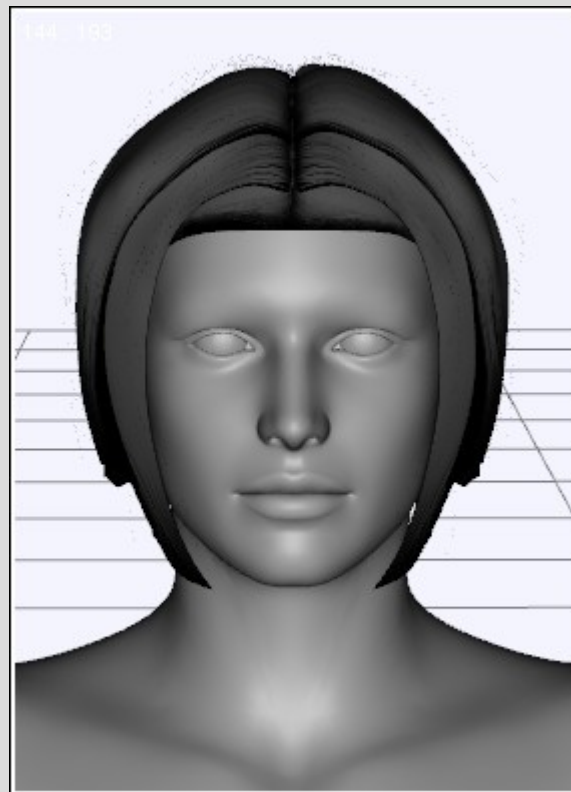
Advanced

[Go to Fast & Easy](#)

Actual Hair has 3 layers to work with; Bottom, Middle and Top.

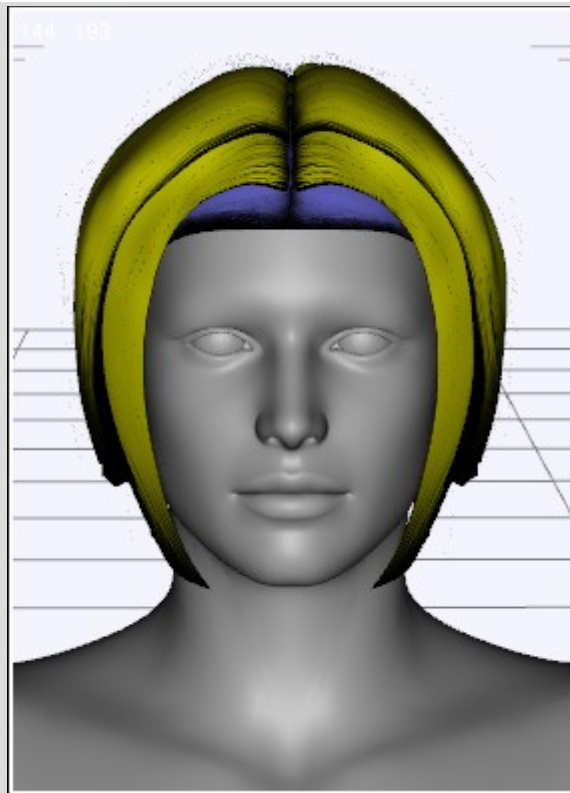
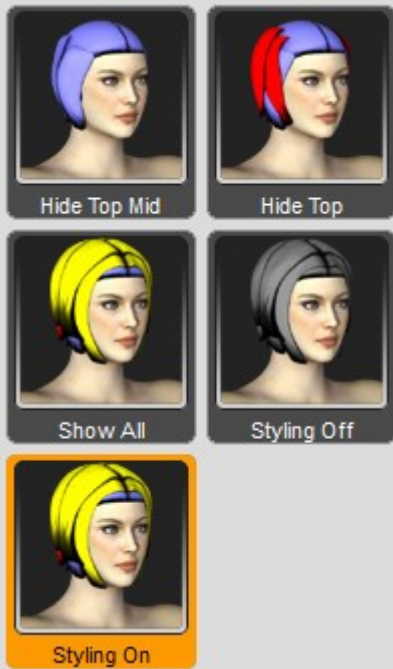
Each Layer has their own set of dials to adjust curling, wave, spread and length. In the advanced section of each layer are dials to adjust each separate part of that layer, these we will use to create a new style.

It is best to create a new style on a default zeroed Genesis, so we're going to clear the scene, load Genesis and load Actual Hair.

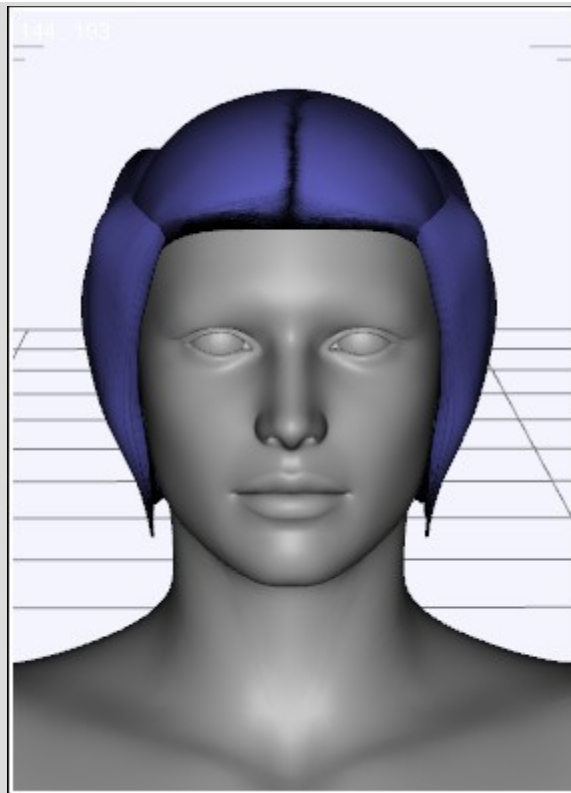


To easily tell the layers apart we will load 'Styling On' from the Styling folder to give each layer it's own color



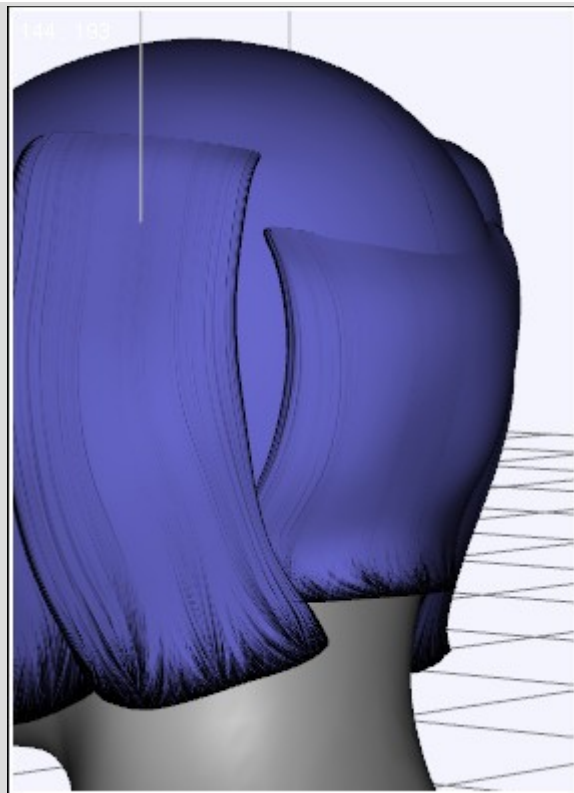


Ok lets get styling, say we want a hairdo that is short on the back and long on the front. Styling goes from the bottom layer up, so we will double click 'Hide Mid Top' from the Styling folder to hide the middle and top layers



Let's start from the back, I adjusted the length of the 'Bottom Back' part with the 'Length' dial and fixed the poke through that caused with the 'Front-Back2' dial





Parameters

- ▼ Hair Posing
  - Basic
  - Bottom
  - ▼ Bottom Advanced
    - Bottom Back**
    - Bottom Left 1
    - Bottom Left 2
    - Bottom Right 1
    - Bottom Right 2
  - Middle
  - Middle Advanced
  - Top
  - Top Advanced

Shaping

Cameras

Front-Back1 0.00

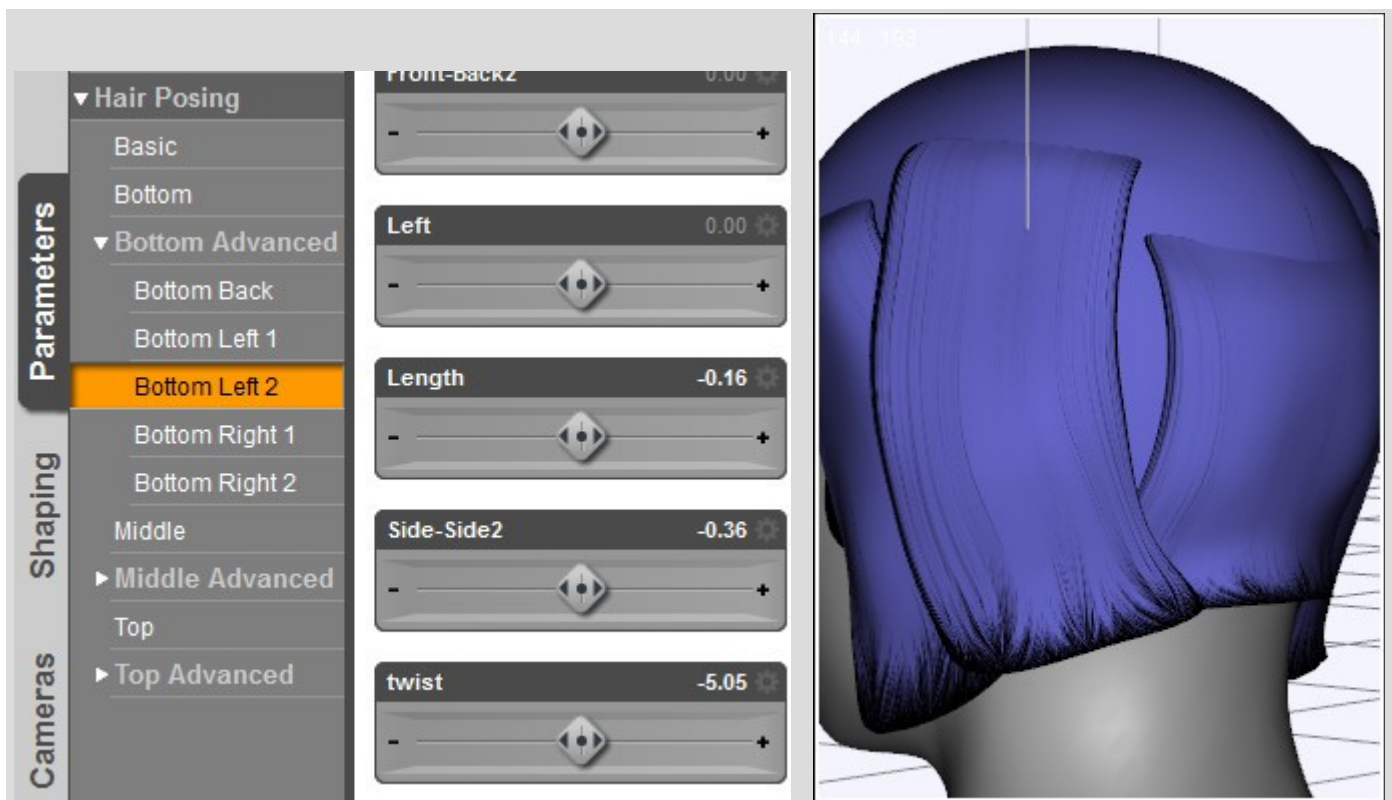
Front-Back2 0.28

Left 0.00

Length -0.43

Right 0.00

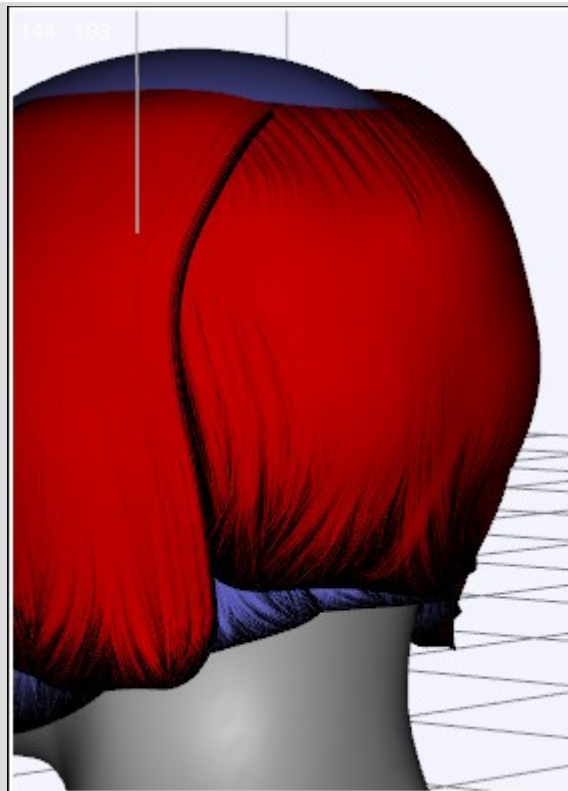
Next I adjust 'Bottom Left 2' to line up with the front and back parts using the 'Length' dial and the 'Side-Side2' and 'Twist' dials to fix the poke through. Just copy the settings from 'Bottom Left 2' to 'Bottom Right 2' to line that up too.



With the bottom layer done we will unhide the middle layer to work on that by double clicking 'Hide Top' in the Styling folder.

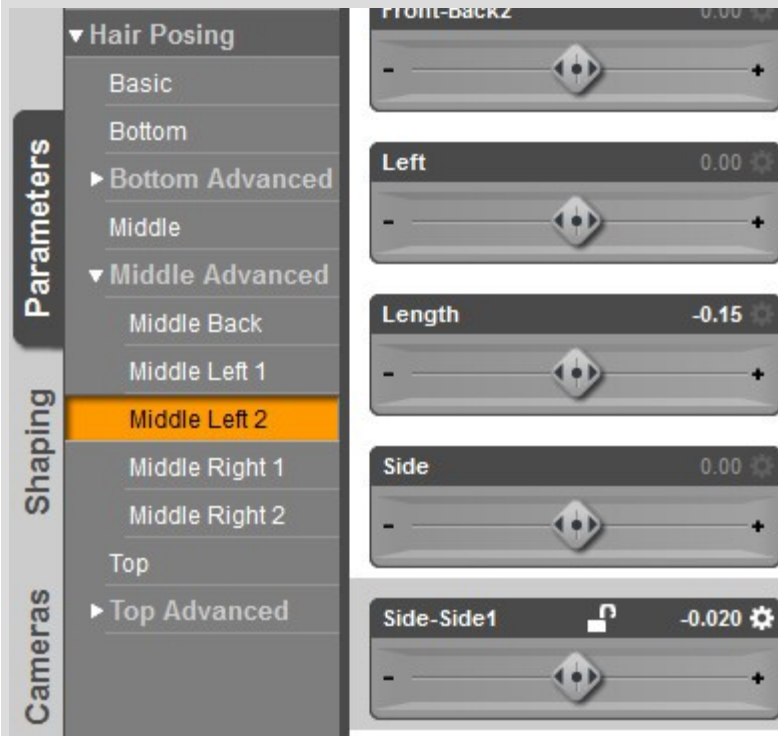


Again we will start from the back adjusting the length and fixing the poke through this time with the 'Back' dial, now obviously using the dials from 'Middle Advanced --> Middle Back'



Parameters	▼ Hair Posing	Cur	0.00
	Basic	-	+
	Bottom		
	▶ Bottom Advanced	Back	0.16
	Middle	-	+
	▼ Middle Advanced	Front	0.00
	Middle Back	-	+
	Middle Left 1		
	Middle Left 2	Length	-0.16
	Middle Right 1	-	+
Middle Right 2	Front-Back2	0.00	
Top	-	+	
▶ Top Advanced			
Shaping			
Cameras			

We move on to the 'Middle Left 2' adjusting the length a bit again to line up with the back part, fixing the poke through with the 'Side-Side2' dial. Again copy the settings to 'Middle Right 2' to line that up too.



Last we will lengthen the parts 'Middle Left 1' and 'Middle Right 1' and bend them in a bit with the 'Side-Side2' dial.



Parameters

- ▼ Hair Posing
  - Basic
  - Bottom
  - ▶ Bottom Advanced
  - Middle
  - ▼ Middle Advanced
    - Middle Back
    - Middle Left 1**
    - Middle Left 2
    - Middle Right 1
    - Middle Right 2
  - Top
  - ▶ Top Advanced

Shaping

Cameras

Front-back2 0.00

Left 0.00

Length 0.37

Side 0.00

Side-Side2 0.44

Now we're done with the middle layer we will unhide the top layer by double clicking 'Show All'





Again we start by adjusting the back, this time from 'Top Advanced --> Top Back', adjusting the length and position with the 'Length' and 'Back' dials



▼ Hair Posing

- Basic
- Bottom
- ▶ Bottom Advanced
- Middle
- ▶ Middle Advanced
- Top
- ▼ Top Advanced
  - Top Back**
  - Top Left 1
  - Top Left 2
  - Top Left 3
  - Top Left 4
  - Top Right 1
  - Top Right 2
  - Top Right 3
  - Top Right 4

Parameters

Shaping

Cameras

Lights

Curl 0.00

Back 0.17

Front 0.00

Front-Back1 0.00

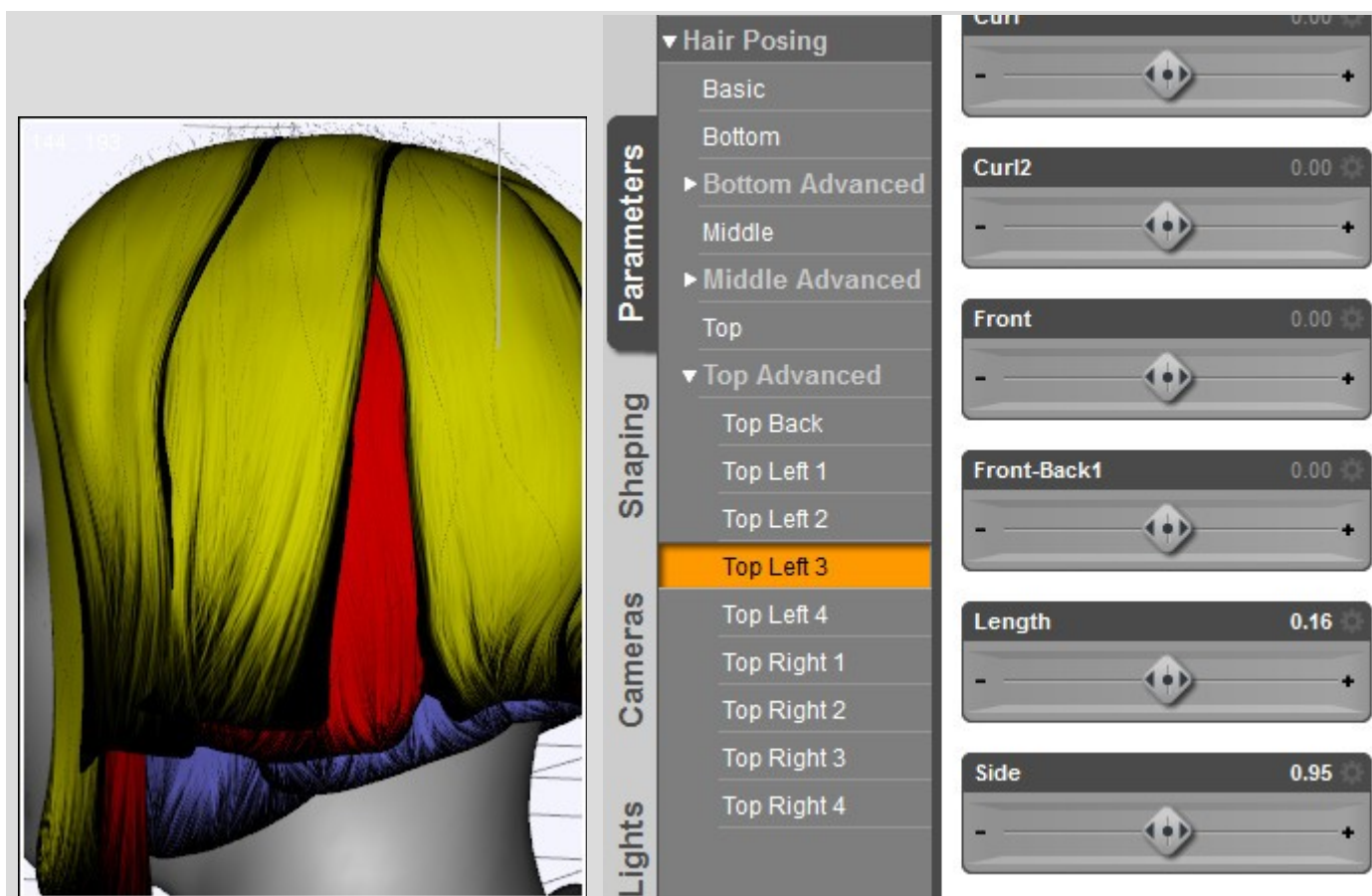
Front-Back2 0.00

Length -0.18

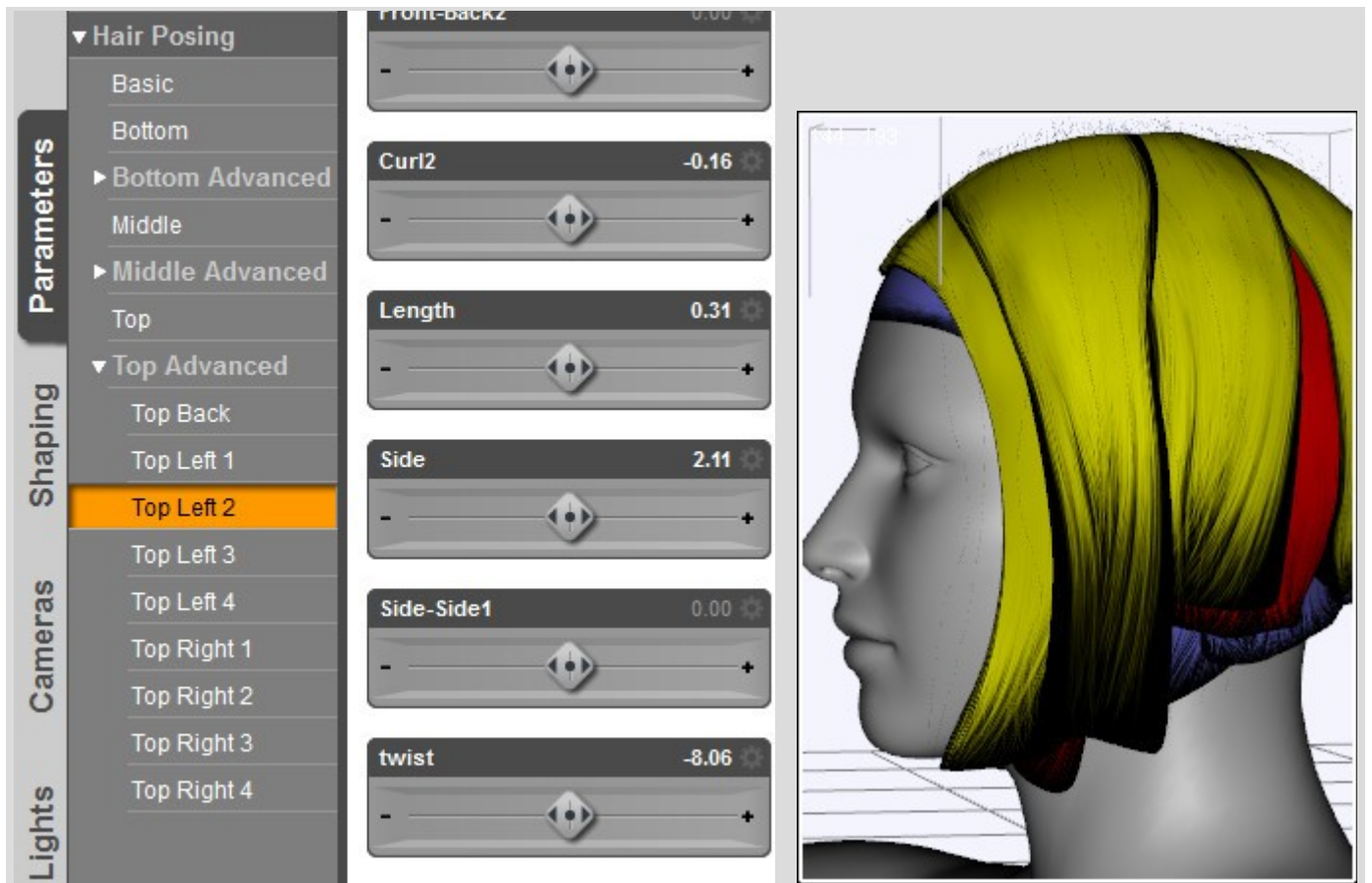
And again we line up the parts 'Top Left 4' and 'Top Right 4' using the 'Length' and 'Back' dials

The image shows a software interface for hair posing. On the left is a vertical menu with categories: Parameters, Shaping, Cameras, and Lights. Under 'Parameters', the 'Top Left 4' option is selected. To the right of the menu is a list of sliders with numerical values: 'Curl' (0.00), 'Back' (0.16), 'Front' (0.00), 'Front-Back1' (0.00), 'Front-Back2' (0.00), and 'Length' (-0.21). On the far right is a 3D view of a character's head with yellow hair. A red area is visible on the side of the head, and a blue area is at the base of the hair. A white line points from the 'Top Left 3' parameter in the menu to the red area on the hair model. The text '44:193' is visible in the top left corner of the 3D view.

Again for parts 'Top Left 3' and 'Top Right 3'

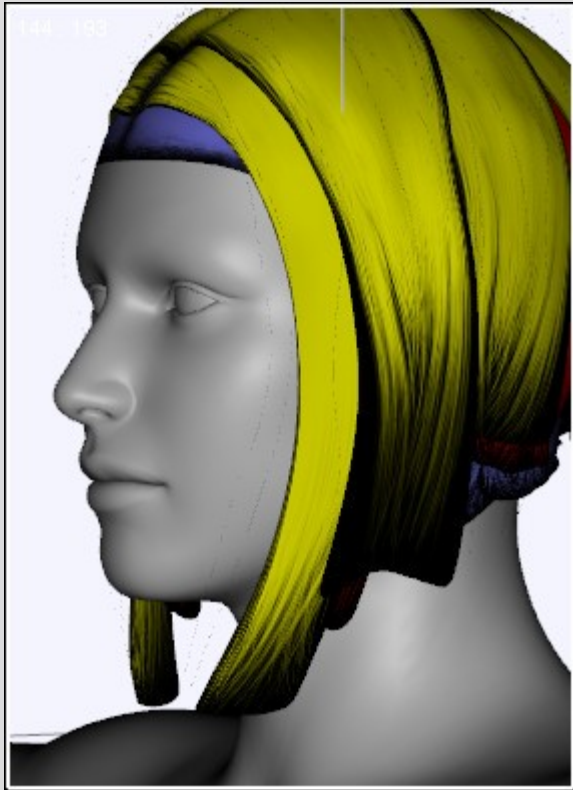


And again for the parts 'Top Left 2' and 'Top Right 2'



And last for the parts 'Top Left 1' and 'Top Right 1'





Parameters

Shaping

Cameras

Lights

- ▼ Hair Posing
  - Basic
  - Bottom
  - ▶ Bottom Advanced
  - Middle
  - ▶ Middle Advanced
  - Top
  - ▼ Top Advanced
    - Top Back
    - Top Left 1**
    - Top Left 2
    - Top Left 3
    - Top Left 4
    - Top Right 1
    - Top Right 2
    - Top Right 3
    - Top Right 4

Front-Back1 0.00

Front-Back2 0.00

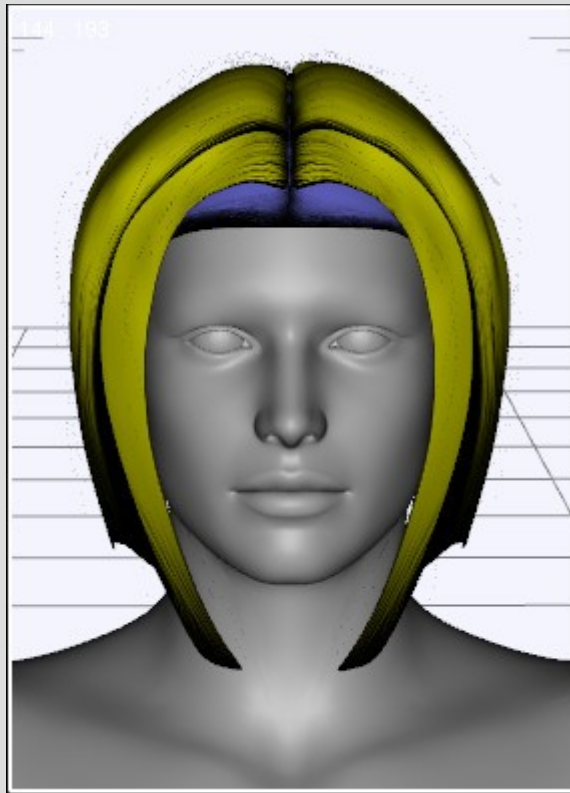
Left 0.00

Length 0.30

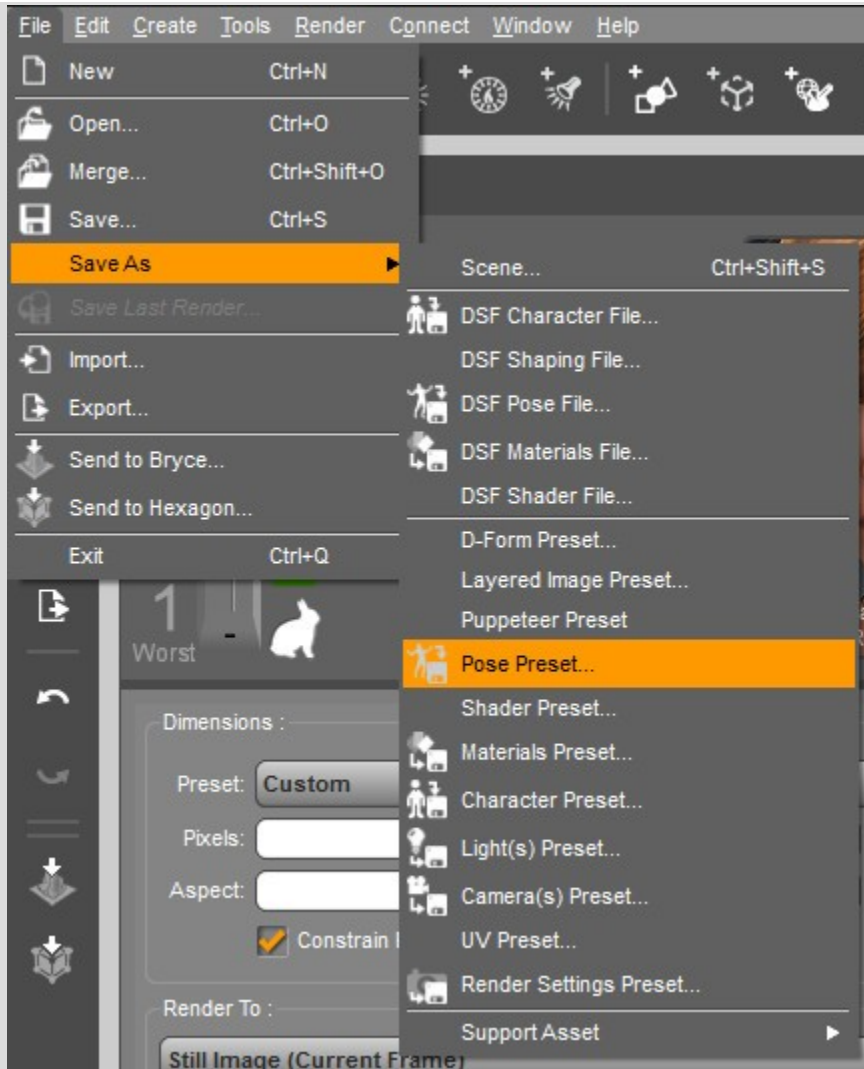
Side -4.60

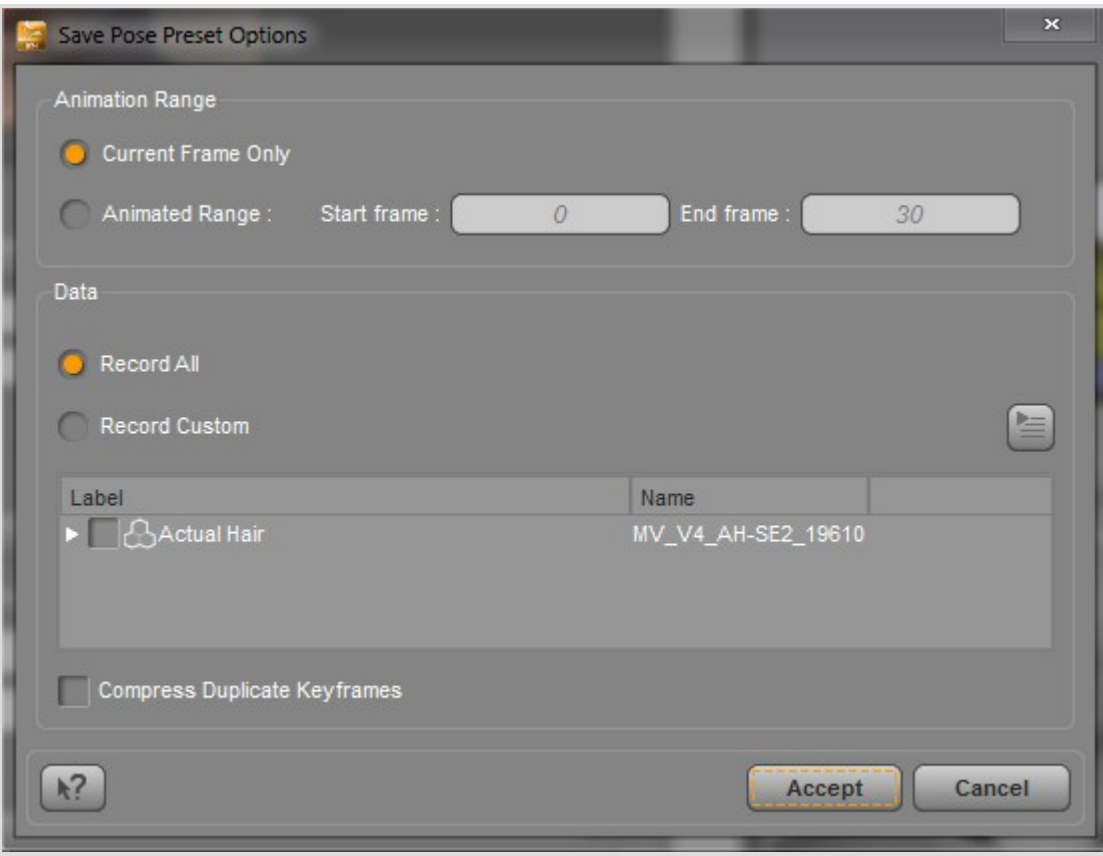
Side-Side1 -0.078

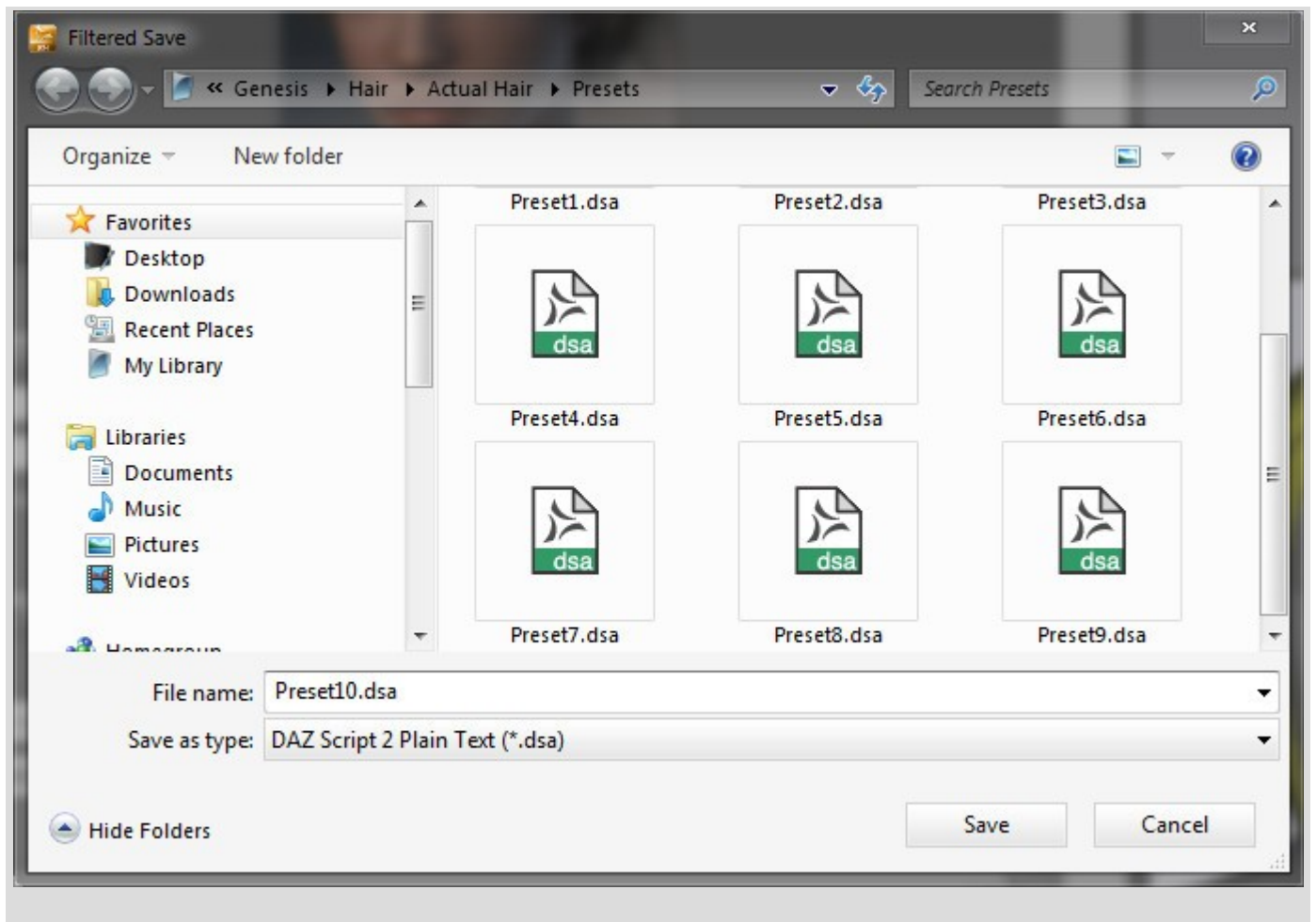


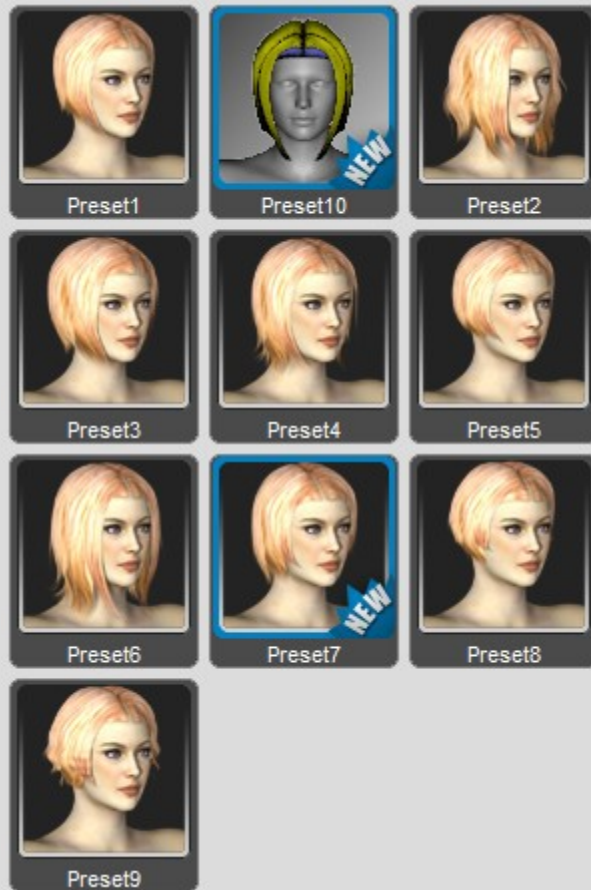


Now our new style is finished we can save it to the Library: With Actual Hair selected  
-->









That's it, you now can use your new style preset following the ['Fast & Easy'](#) steps and share it with other Actual Hair users.

Thank you for purchasing this product and I hope you will enjoy it.

~M

