

Decimator

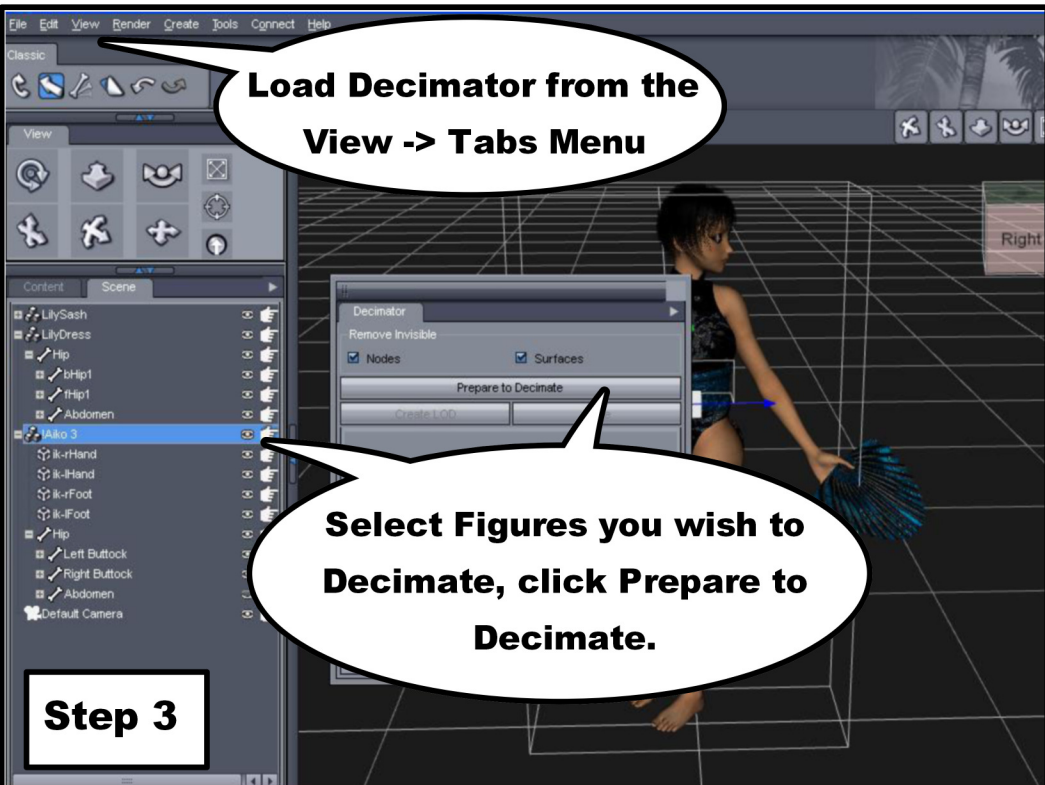
**Load Figure,
Clothing, Props,
etc.**

Step 1



**Hide any body parts
that are not visible
under clothing.**

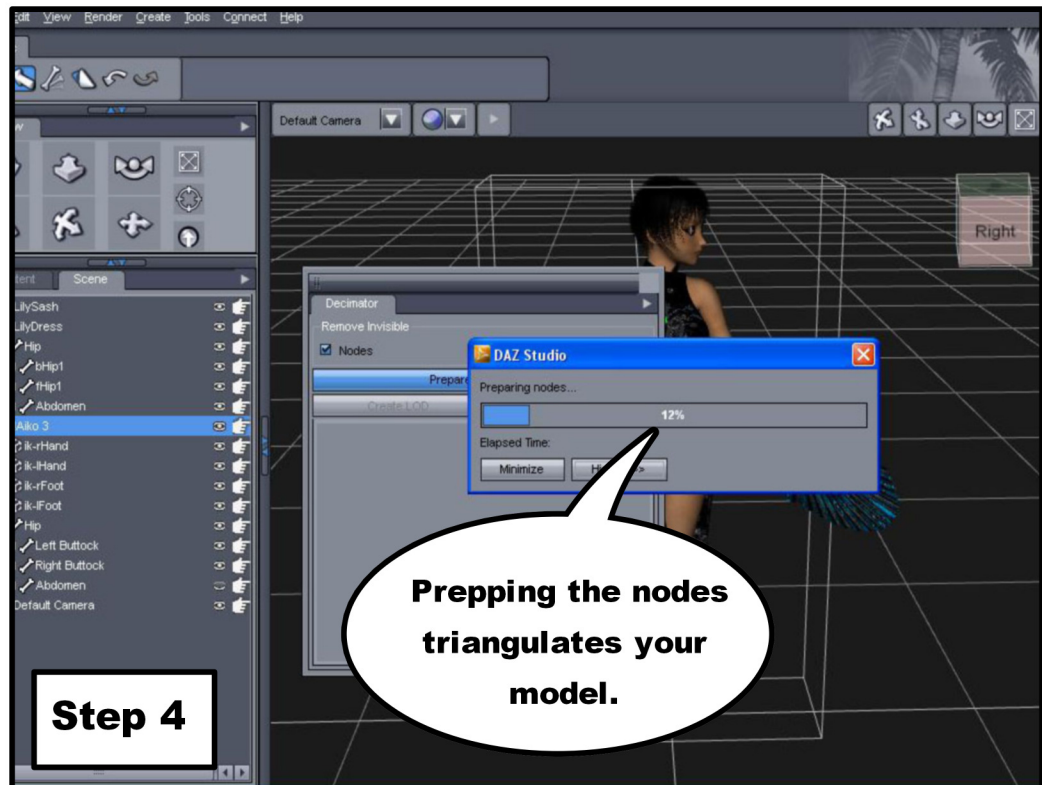
Step 2



**Load Decimator from the
View -> Tabs Menu**

**Select Figures you wish to
Decimate, click Prepare to
Decimate.**

Step 3



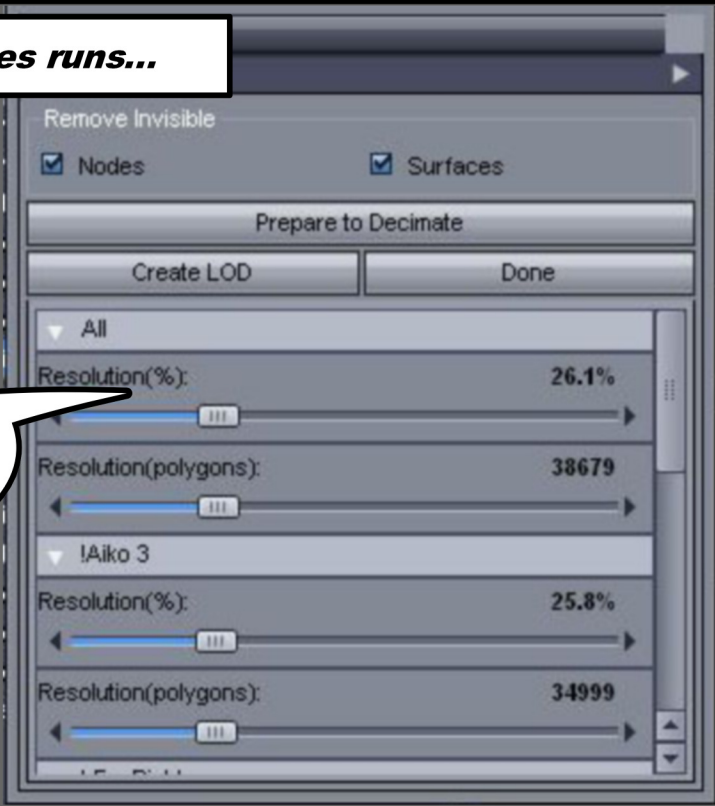
**Prepping the nodes
triangulates your
model.**

Step 4

After Prep Nodes runs...

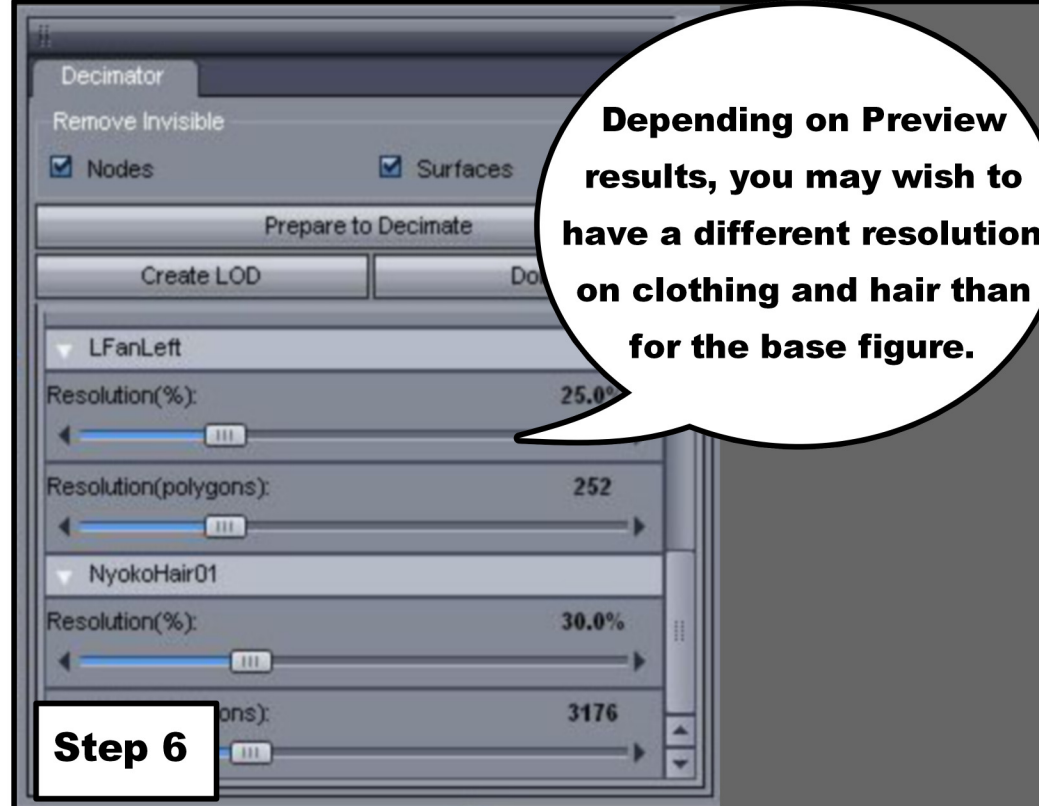
Select the resolutions for your models.

Step 5



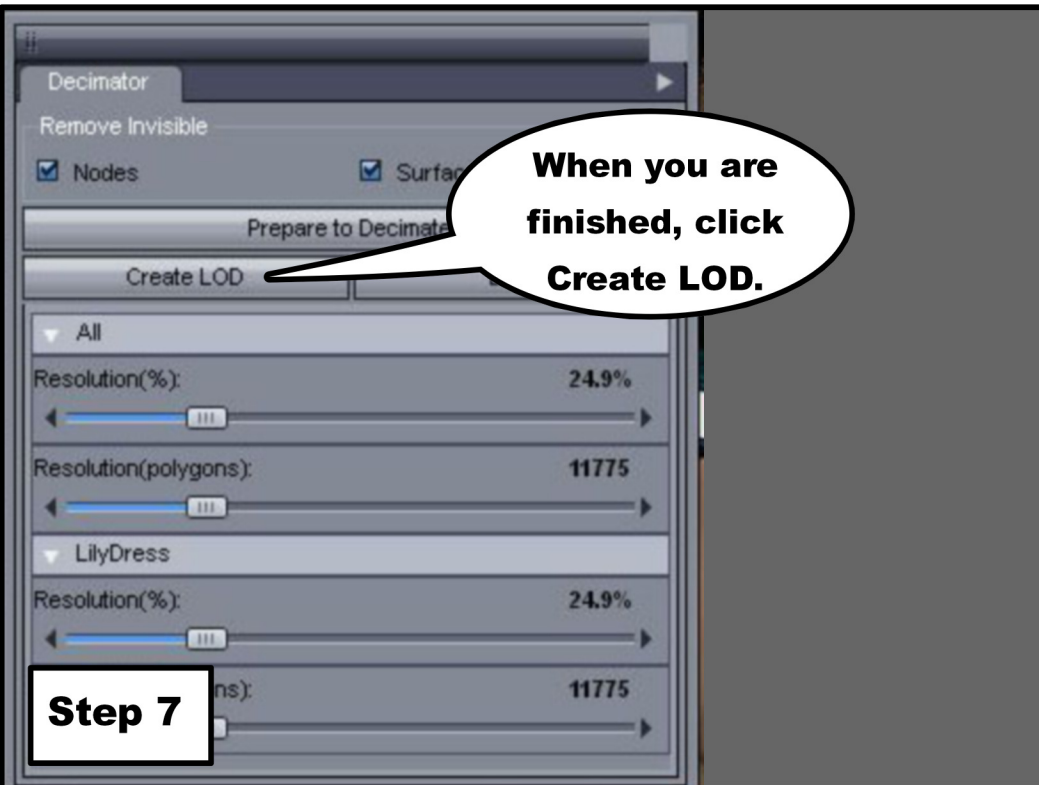
Depending on Preview results, you may wish to have a different resolution on clothing and hair than for the base figure.

Step 6



When you are finished, click Create LOD.

Step 7



Step 8

Name your LOD and Click OK to Accept.

